

FW23 COLLECTION



FOR THE
PLANET.



CLIMATE
NEUTRAL



ICEBUG®
SWEDISH TRACTION FOOTWEAR



A changemaking community

Our vision is to be a changemaker for a society where people can thrive, on a planet in balance.

This is not some dreamy, distant outcome of the work we do.

It is the work.

Every day, for all of us.



Not about being perfect but about being ethical

We act on best knowledge. Strive for maximum impact.
Focus on what we're uniquely positioned to do.

Taking your responsibility by doing the right thing when you know what the right thing is.

If we believe that the World needs to be on a strict CO₂ budget and that a 50% emission cut is needed by 2030, we need to get on that program too, and we can't air freight products home just to catch the sales.

Since we don't have to satisfy the stock market or venture capitalists, the boundary is not "we will do this as long as it doesn't hurt our profit". Growth and profit don't have a real value for us by themselves, but only to secure our survival and as a means to make more impact towards our vision.

To make this happen we need to change the culture around us, to a culture where resources are respected, to a culture where taking care of things you already own gives more of a kick than buying new stuff, to a culture where the quality of an experience isn't measured by how exotic or flashy it is, when spending some time in the forest together with people you like can be just as or even more fulfilling.

To a business culture where you don't prioritize your short-term profit over long term effects on people and nature.

The decisive decade

2020–2030 has been named the “decisive decade”, where we need to take action to counter climate change and biodiversity loss, and we believe that’s true.

We’re now a couple of days into the second year of it. These times call for all of us to find our inner motivation for becoming our version of activists, to find what we love and how we want to protect that.





**It's you being a changemaker
that will make a difference.**

TRACTION TECHNOLOGIES

BUGrip®

DYNAMIC STUDS



BUGrip® – is the name of Icebug's traction technology for the most slippery conditions. A BUGrip® sole is made of a special rubber compound, with 23% natural rubber, and has 14–19 integrated steel studs. Tips are made of carbide steel which makes them extremely durable.

The design of the studs, together with the properties of the rubber compound, give these studs a dynamic function. The

studs work independently from each other and are not completely fixed. When weight is applied the studs push in toward the surface of the sole. How far they are pushed in depends on the pressure exerted by the user and the resistance from the ground. This dynamic function makes the studs adapt to the surface and provide the best possible traction on anything from dry asphalt to pure ice.

OLX

FIXED STUDS



The Fixed Studs do not adjust to the surface like the Dynamic Studs in the BUGrip® system, instead they are always exposed and grip whatever surface that comes in their way. With Fixed Studs it's possible to make the sole relatively thin which saves weight and improves the ground control. The sole has 23% natural rubber.

The Fixed Studs system is exclusively used in shoes for very demanding terrain, where reliable traction is of utmost importance. The studs are made of steel and has carbide steel tips, which makes them almost impossible to wear down. The shoes with Fixed Studs have "OLX" added to the models' name.

RB9X®

RUBBER 9 EXTREME



Rubber 9 Extreme (RB9X®) is a groundbreaking rubber compound development. It sets a whole new standard in providing traction on, specially, wet surfaces. The RB9X sole compound has 31% natural rubber.

Lab tests (SATRA) show that RB9X® outgrips the competition on both dry and wet surfaces but still matches the durability (DIN53516 < 120) of an asphalt running shoe.

In real action that means up-graded and long-lasting traction reliability in wet and slippery conditions.

BIOSOLE™

BIOSOLE



Biosole is a new traction rubber compound developed by Icebug. Natural rubber is replacing synthetic rubber which means a reduced oil dependency. It also leads to reduced climate impact since natural rubber has half the impact compared to synthetic rubber.

Biosole contains 62% natural rubber, 7% synthetic rubber and 31% non-oil based fillers and agents. The abrasion resistance is excellent giving a very durable outsole.

The unique feature of Biosole is the maintained softness also in very low temperatures resulting in great grip and walking comfort all year around.

MICHELIN

WINTER RUBBER TRACTION



For shifting autumn and winter conditions, ranging from wet city pavements to frosty gravel roads, providing proper unstudded traction can be a challenge. Especially since rubber tends to harden and get stiff as temperature drops. In a collaboration with MICHELIN Technical Soles, Icebug now offers a winter adapted rubber outsole. Developed with the ICE Control Technology, solution formulated to provide superior ground control in snow or ice. This technology allows you to relax and enjoy being outside, no matter how slippery it is. There is no better unstudded winter traction.

The tread pattern of the outsole is based on the legendary MICHELIN X-Ice Xi3 winter tire, with Cross Z Sipes that provide traction on ice and wide grooves for excellent water evacuation and flexibility. The MICHELIN Winter Compound (Wic) is an anti-slip compound that offers both reliable traction and good abrasion resistance in temperatures down to " -30°C (-22°F).

Michelin soles have 45% natural rubber.

RUNNING

The freedom of continuing those forest or road runs even when it's getting cold, slippery and dark is quite something!

With excellent traction, reflective details and closed textiles uppers our winter running shoes will keep you on your feet even in the most rugged terrain.

Our goal is to inspire and help people to stay active outdoors regardless of weather conditions, and we continue to deliver this possibility.



OVERVIEW RUNNING



NEWRUN BUGRIP®
Aqua
M: G18001-9G
W: G18002-9G



NEWRUN BUGRIP®
Black/Apricot
M: G18001-9H
W: G18002-9H



NEWRUN BUGRIP®
TealBlue/Orange
M: G18001-9I
W: G18002-9I



NEWRUN BUGRIP® GTX
Black/Poison
M: G18003-9A



NEWRUN BUGRIP® GTX
MistBlue/FireOrange
M: G18003-9C



NEWRUN BUGRIP® GTX
Black/JadeMist
W: G18004-9A



NEWRUN BUGRIP® GTX
MistBlue/Aqua
W: G18004-9C



ARCUS BUGRIP®
NightSky/Orange
M: H70005-9A



ARCUS BUGRIP®
NightSky/Mint
W: H70006-9B



ARCUS BUGRIP® GTX
True Black
M: H70001-9A
W: H70002-9A



ARCUS BUGRIP® GTX
Autumn/Mist
M: H70001-9D
W: H70002-9D



ARCUS BUGRIP® GTX
Cloudblue
M: H70001-9C
W: H70002-9C



ARCUS RB9X® GTX
TrueBlack
M: H73001-0A
W: H73002-0A



ARCUS RB9X® GTX
Green/Stone
M: H73001-0C
W: H73002-0C



ARCUS RB9X® GTX
Ocean/Lime
M: H73001-0E
W: H73002-0E



AURA RB9X®
LightGrey/Lime
M: I23001-0B
W: I23002-0B



AURA RB9X®
DeepBlue/Copper
M: I23001-0D
W: I23002-0D



ROVER BUGRIP® GTX
TrueBlack
M: D5445-9A
W: D5446-9A



ROVER BUGRIP® GTX
Thyme/Charcoal
M: D5445-9C



ROVER BUGRIP® GTX
NightSky/Blue
W: D5446-9C



ROVER RB9X® GTX
Black/Slate Grey
M: D5453-0A
W: D5454-0A



ROVER RB9X® GTX
Teal/Stone
M: D5453-0B



ROVER RB9X® GTX
Blueberry
W: D5454-0E



PYTHO6 BUGRIP®
DarkBlue/Mint
M: H89001-9A
W: H89002-9A



PYTHO6 BUGRIP®
Lime/Mint
M: H89001-9D
W: H89002-9D



PYTHO6 RB9X®
Petroleum/Orange
M: H91001-0B



PYTHO6 RB9X®
Petroleum/Aruba
W: H91002-0B



ACCELERITAS8 RB9X®
Orange/Black
M: B53101-0B



ACCELERITAS8 RB9X®
Ocean/Orange
W: B53102-0B



SPIRIT8 OLX
Poison/Black
M: A98101-9B
W: A98102-9B



SISU OLX
Poison
M: A98105-9A
W: A98106-9A



NEWRUN BUGrip®

Running at winter roads, gravel roads and city parks.

BUGrip® outsole with 17 dynamic steel studs / Platform for winter road running / Roomy toe box and top notch comfort.

NewRun is the first real road running shoe from Icebug. This is the light version without membrane, aiming at those that prioritize low weight and runnability. Water repellent upper with mesh lining add just the right amount of weather protection for the active runner. Lacing system with recycled PET laces that are easy to adjust and makes NewRun fit like a glove.

Wide sole base with a well cushioned midsole add both stability and long distance comfort. BUGrip® outsole provides traction all winter surfaces but behaves completely civilized on asphalt.



NewRun M BUGrip® Aqua
G18001-9G

NewRun W BUGrip® Aqua
G18002-9G



NewRun M BUGrip® Black/Apricot
G18001-9H

NewRun W BUGrip® Black/Apricot
G18002-9H



NewRun M BUGrip® TealBlue/Orange
G18001-9I

NewRun W BUGrip® TealBlue/Orange
G18002-9I



Upper:	Bluesign® high abrasion Polyester mesh; Welded TPU mudguard.
Lining:	Quick dry bluesign®, solution dyed, recycled Polyester mesh.
Insock:	Ortholite Hybrid®, bluesign®, solution dyed and GRS certified 100% recycled Polyester.
Midsole:	Lightweight EVA with 20% BLOOM® foam.
Outsole:	BUGrip®, 17 carbide studs and rubber.
Weight:	300 gr (US 10)/255 gr (USL 7,5)
Size:	US 7–15 (40–49)/USL 5,5–USL 10,5 (36–42)
Torsion:	Medium
Drop:	7 mm
Cushioning:	Full
Last:	Medium

SUSTAINABLE HIGHLIGHTS:

- Upper with bluesign® Polyester textile, with Low impact dyeing.
- Lining made of bluesign®, solution dyed, recycled Polyester.
- Insock liner made of bluesign®, solution dyed, recycled Polyester/Orthwid®
- Heel/Toe counters: Milspeed, 11–12% recycled fishing nets, 45–48% recycled polyethylene.
- Midsole compound made with 20% BLOOM® foam EVA.



BLOOM



8,4 kg



27%



11%



NEWRUN BUGrip® GTX

Running at winter roads, gravel roads and city parks.

BUGrip® outsole with 17 dynamic steel studs / GORE-TEX® membrane / The BOA® Fit System / Roomy toe box.

NewRun is the first real road running shoe from Icebug and it aims at all those that want to keep logging miles all year long. Why deviate from (or cancel!) the regular workout routine only because conditions got wintry? High comfort has been in focus when developing this shoe and then a waterproof GORE-TEX® upper crowned with the BOA® Fit

System were obvious features to add. Low temperatures don't go well with a narrow fit so the last has a roomy toe box and a straight toe line. The sole is well cushioned and its wide base both stability and long distance comfort are achieved. BUGrip® outsole with dynamic steel studs makes running on icy surfaces feel like a walk in a park.



NewRun M BUGrip® GTX Black / Poison
G18003-9A



NewRun M BUGrip® GTX MistBlue / FireOrange
G18003-9C



NewRun W BUGrip® GTX Black / JadeMist
G18004-9A



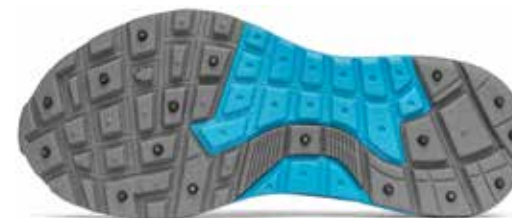
NewRun W BUGrip® GTX MistBlue / Aqua
G18004-9C



Upper:	Bluesign® Polyester, Low impact dyeing, TPU laminate. Protective TPU mudguard.
Lining:	GORE-TEX® Extended Comfort. Bluesign® and Oeko-Tex® 100 certified textile.
Lacing:	The BOA® Fit System.
Insock:	Ortholite Hybrid®, bluesign®, solution dyed and GRS certified 100% recycled Polyester.
Midsole:	Lightweight EVA with 20% BLOOM® foam.
Outsole:	BUGrip®, 17 carbide studs and rubber.
Weight:	320 gr (US 10)/275 gr (USL 7,5)
Size:	US 7–13 (40–47)/USL 5,5–USL 10,5 (36–42)
Torsion:	Medium
Drop:	7 mm
Cushioning:	Full
Last:	Medium

SUSTAINABLE HIGHLIGHTS:

- Upper with bluesign® Polyester textile, with Low impact dyeing.
- GORE-TEX® lining is bluesign® and meets Oeko-Tex® criteria.
- Insock liner made of bluesign®, solution dyed, recycled Polyester / Ortholite Hybrid®.
- Heel/Toe counters: Milspeed, 11–12% recycled fishing nets, 45–48% recycled polyethylene.
- Midsole compound made with 20% BLOOM® foam EVA.



8,9 kg



25%



10%



ARCUS BUGrip®

Long distance winter comfort.

BUGrip® outsole with 13 dynamic steel studs / Water resistant / Full cushioning and high comfort.

Arcus BUGrip® is the perfect shoe for those looking for extra cushioning, whether it might be for longer runs, recovery runs or when running with a backpack. To enhance the comfort and great running feeling it has a rocker midsole to reduce pressure on the forefoot and heel and aid the momentum forward – giving a smooth stride. The midsole

has higher density in the front giving a more responsive toe-off. This gives great comfort on longer runs and yet provides responsiveness and a great running feeling. Combined with a light upper with midfoot lock, the BUGrip® outsole has thirteen dynamic studs that provide reliable traction on all winter surfaces.



Arcus M BUGrip® NightSky/Orange
H70005-9A



Arcus W BUGrip® NightSky/Mint
H70006-9B



Upper:	Bluesign® 100 % recycled GRS certified PET Polyester. Protective TPU mudguard.
Insock:	Ortholite Hybrid®, lined with solution dyed and bluesign® certified textile made with 100 % recycled GRS certified PET Polyester textile.
Midsole:	Lightweight EVA with 20 % BLOOM® foam.
Outsole:	Rubber with BUGrip® 13 carbide tip studs.
Size:	US 7–13 (40–47)/USL 5,5–USL 10,5 (36–42)
Torsion:	Medium Flex
Drop:	6 mm
Cushioning:	Full
Last:	Regular fit with straight toebox.

SUSTAINABLE HIGHLIGHTS:

- Upper with bluesign® 100 % recycled PET Polyester.
- Insock liner made of bluesign®, solution dyed, recycled Polyester/Ortholite Hybrid®.
- Heel/Toe counters: Reinforcement of 50 % recycled PET.
- Midsole compound made with 20 % BLOOM® foam EVA.



BLOOM



8,5 kg



26%



8%



ARCUS BUGrip® GTX

Long distance winter comfort.

High cushioning and comfort / GORE-TEX® membrane / BUGrip® outsole with 13 dynamic steel stud.

Arcus is the name of a cloud formation and this is exactly what this shoe feels like, with its low weight and high cushion. It can withstand tough weather thanks to the water-proof GORE-TEX® Invisible membrane. The membrane is integrated with the upper material, making it even softer and more comfortable than a traditional membrane bootie construction.

This shoe is for the user that wants to have extra cushioning, whether it might be for longer runs, recovery runs or when running with a backpack. To enhance the comfort

and great running feeling it has a rocker midsole to reduce pressure on the forefoot and heel and aid the momentum forward – giving a smooth stride. The midsole has higher density in the front giving a more responsive toe-off. This gives great comfort on longer runs and yet provides responsiveness and a great running feeling. The BUGrip® outsole has thirteen dynamic studs that provide reliable traction on all winter surfaces.



Arcus M BUGrip® GTX True Black
H70001-9A

Arcus W BUGrip® GTX True Black
H70002-9A



Arcus M BUGrip® GTX Autumn / Mist
H70001-9D

Arcus W BUGrip® GTX Autumn / Mist
H70002-9D



Arcus M BUGrip® GTX Cloudblue
H70001-9C

Arcus W BUGrip® GTX Cloudblue
H70002-9C



Upper:	Bluesign® 100 % recycled GRS certified PET Polyester. Protective TPU mudguard.
Collar Lining:	Bluesign®, solution dyed and 100 % recycled GRS certified PET Polyester.
Membrane:	GORE-TEX® Invisible Fit, Oeko-Tex® 100 lining.
Insock:	Ortholite Hybrid®, lined with solution dyed and bluesign® certified textile made with 100 % recycled GRS certified PET Polyester textile.
Midsole:	Lightweight EVA with 20 % BLOOM® foam.
Outsole:	Rubber with BUGrip® 13 carbide tip studs.
Weight:	340 gr (US 10)/275 gr (USL 7,5)
Size:	US 7–13 (40–47)/USL 5,5–USL 10,5 (36–42)
Torsion:	Medium Flex
Drop:	6 mm
Cushioning:	Full
Last:	Regular fit with straight big toe line and roomy toe box.

SUSTAINABLE HIGHLIGHTS:

- Upper with bluesign® 100 % recycled PET Polyester.
- GORE-TEX® lining is bluesign® and meets Oeko-Tex® criteria.
- Insock liner made of bluesign®, solution dyed, recycled Polyester / Ortholite Hybrid®.
- Heel / Toe counters: Reinforcement of 50 % recycled PET.
- Midsole compound made with 20 % BLOOM® foam EVA.



BLOOM



9,0 kg



20%



9%



ARCUS RB9X® GTX

Long distance runs and walks on gravel roads
and light trails in all kinds of weaher.

RB9X® non-studded traction rubber / Waterproof GORE-TEX® membrane / Full cushion and high comfort.

The perfect shoe for long gravel road runs. Arcus protects from foul weather thanks to the waterproof GORE-TEX® Invisible membrane. The membrane is integrated with the upper material, making it even softer and more comfortable than a traditional membrane bootie construction.

This shoe is for the user that wants to have extra cushioning, whether it might be for longer runs, recovery runs or when running with a backpack. To enhance the comfort

and great running feeling it has a rocker midsole to reduce pressure on the forefoot and heel and aid the momentum forward – giving a smooth stride. The midsole is made of compression molded EVA which enables a natural dual density where the forefoot has a higher density – giving a more responsive toe-off. This gives great comfort on longer runs and yet provides responsiveness and a great running feeling. The RB9X® outsole provides traction on both dry and wet surfaces, making Arcus the perfect running shoe in most weather conditions.



Arcus M RB9X® GTX TrueBlack
H73001-0A

Arcus W RB9X® GTX TrueBlack
H73002-0A



Arcus M RB9X® GTX Green/Stone
H73001-0C

Arcus W RB9X® GTX Green/Stone
H73002-0C



Arcus M RB9X® GTX Ocean/Lime
H73001-0E

Arcus W RB9X® GTX Ocean/Lime
H73002-0E



Upper:	Bluesign® PET polyester, from 100 % recycled GRS certified textile. Protective TPU mudguard.
Lining:	PET Polyester. 100 % recycled, bluesign® and solution dyed, GRS certified.
Membrane:	GORE-TEX® Invisible Fit, Oeko-Tex® 100 lining.
Insock:	OrthoLite® Hybrid, removable.
Midsole:	Lightweight EVA with 20 % BLOOM® foam.
Outsole:	RB9X® non-studded traction rubber.
Weight:	315 gr (US10)/250 gr (USL 7,5)
Size:	US 7–15 (40–49)/USL 5,5–USL 11,5 (36–43)
Torsion:	Medium Flex
Drop:	6 mm
Cushioning:	Full
Last:	Regular with roomy toebox.

SUSTAINABLE HIGHLIGHTS:

- The RB9X® outsole contains 31 % natural rubber and 15 % recycled rubber.
- Upper with bluesign® 100 % recycled PET Polyester.
- Midsole EVA contains 20 % BLOOM® foam, which is partly made from algae from overgrown lakes.
- The Milspeed inner heel and toe reinforcements are made of 60 % recycled plastic, out of which 11–12 % are recycled nylon fishing nets.



9 kg



23 %



11 %



AURA RB9X®

Comfortable yet light running shoe
with focus on asphalt and gravel roads.

RB9X® outsole / Airy mesh upper / Fully cushioned and high comfort level.

Aura is a running shoe with focus on comfort. The airy and very light upper has engineered mesh zones with structure that makes additional reinforcement materials unnecessary, lowering both the weight and the environmental impact. The comfort is further enhanced by the OrthoLite® HybridPlus-Bio™ insock and the wide last. The rear pointing heel shape reduces pressure on the achilleas tendon as well as providing an easy and convenient instep. The heel cup shape keeps the foot in place.

The cut-outs around the eyestay makes it wrap perfectly around the foot, adapting seamlessly to each individual preference. The tongue has elastic bands on the sides,

ensuring the absolute best fit regardless of foot shape and giving that snug feeling. The fully cushioned midsole has a 6mm drop and is made of BUGforce® and BLOOM® foam EVA creating a smooth ride. The BUGforce® is not only propelling you forward but also prolongs the midsole compound's performance and lifetime by not getting compressed as fast as normal EVA. The rubber outsole is designed for asphalt and gravel running, with a lower lug depth. The rubber is open in the middle and in the back, below the heelbone, to give a softer heel strike. The RB9X® compound provides reliable traction in both dry and wet conditions.



Aura M RB9X® LightGrey/Lime
I23001-0B

Aura W RB9X® LightGrey/Lime
I23002-0B



Aura M RB9X® DeepBlue/Copper
I23001-0D

Aura W RB9X® DeepBlue/Copper
I23002-0D



Upper:	Engineered mesh in bluesign® 70 % recycled GRS certified PET Polyester.
Lining:	PET Polyester. 100 % recycled, bluesign® and solution dyed, GRS certified.
Insock:	OrthoLite® HybridPlus-Bio™, removable.
Midsole:	BUGforce® EVA with 20 % BLOOM® foam.
Outsole:	RB9X® non-studded traction rubber.
Weight:	295 gr (US 10)/250 gr (USL 7,5)
Size:	US 7–13 (40 – 47)/USL 5,5–USL 11,5 (36–43)
Torsion:	Medium Flex
Drop:	6 mm
Cushioning:	Full
Last:	Regular with roomy toebox.

SUSTAINABLE HIGHLIGHTS:

- Upper is made of bluesign®, solution dyed and 70 % recycled GRS certified PET Polyester.
- Midsole EVA contains 20 % BLOOM® foam, which is partly made from algae from overgrown lakes.
- The RB9X® outsole contains 31 % natural rubber and 15 % recycled rubber.





ROVER BUGrip® GTX

Running, hiking and speed walking.

BUGrip® outsole with 19 dynamic steel studs RB9X® / Waterproof GORE-TEX® membrane / The BOA® Fit System.

Versatile shoe for a wide variety of activities, from speed hiking to light trail running. Durable yet smooth bluesign® Polyester upper, GORE-TEX® membrane keeps water out and the foot dry. The BOA® Fit System secures perfect upper fit with even closure and makes the handling very convenient.

The high torsion and fully cushioned midsole, in combination with the ESS system, result in a stable shoe that protects from over-pronating. Wide last and soft padding around

heel counter is a combo that creates high comfort. The BUGrip® outsole allows you to maintain the pace and keep the stride relaxed through whatever condition winter is throwing at you!



Rover M BUGrip® GTX TrueBlack
D5445-9A

Rover W BUGrip® GTX TrueBlack
D5446-9A



Rover M BUGrip® GTX Thyme/Charcoal
D5445-9C



Rover W BUGrip® GTX NightSky/Blue
D5446-9C



Upper:	Bluesign® Polyester textile / protective TPU mudguard.
Lining:	GORE-TEX® Extended Comfort membrane with bluesign® and Oeko-Tex® 100 certified lining textile.
Lacing:	The BOA® Fit System.
Insock:	OrthoLite® Hybrid®, lined with 100 % recycled GRS certified PET Polyester, which is bluesign® certified and solution dyed. Removable.
Midsole:	Lightweight EVA with 20 % BLOOM foam, ESS stabilizer.
Outsole:	Rubber with BUGrip® carbide steel tip studs.
Weight:	350gr (US 9)/ 295gr (USL7,5)
Size:	US 7 – 13 (40–47)/USL 5,5–USL 10,5 (36–42)
Torsion:	Stability Flex
Drop :	12 mm
Cushioning:	Full
Last:	Wide

SUSTAINABLE HIGHLIGHTS:

- Dyeing.
- The GORE-TEX® lining is bluesign® certified and meets the STANDARD 100 by OEKO-TEX®.
- The Milspeed inner heel and toe reinforcements are made of 60 % recycled plastic, out of which 11–12 % are recycled nylon fishing nets.
- Midsole EVA contains 20 % BLOOM® foam, which is made from algae from overgrown lakes.



0 kg



0 %



0 %



ROVER RB9X[®] GTX

Running and speed hiking.

RB9X[®] non-studded traction rubber / Waterproof GORE-TEX[®] membrane / The BOA[®] Fit System.

Regardless if it comes to long distance running on rocky trails or a slow jog in foul weather a healthy foot climate is what can be expected from this versatile shoe. Durable yet smooth bluesign[®] Polyester upper, GORE-TEX[®] membrane keeps water out and the foot dry. The BOA[®] Fit System secures perfect upper fit with even closure and makes

the handling very convenient. The high torsion and fully cushioned midsole, in combination with the ESS system, result in a stable shoe that protects from over-pronating. The outsole pattern is designed so grip in mud as well as on rocks and together with the RB9X[®].



Rover M RB9X® GTX Black/Slate Grey
D5453-0A

Rover W RB9X® GTX Black/Slate Grey
D5454-0A



Rover M RB9X® GTX Teal/Stone
D5453-0B



Rover W RB9X® GTX Blueberry
D5454-0E



Upper:	Bluesign® PET Polyester, solution dyed.
Lining:	GORE-TEX® Extended Comfort membrane with bluesign® and Oeko-Tex® 100 certified lining textile.
Lacing:	The BOA® Fit System.
Insock:	OrthoLite® Hybrid, removable.
Midsole:	Lightweight EVA with 20% BLOOM® foam.
Outsole:	RB9X® non-studded traction rubber.
Weight:	345 gr (US 10)/295 gr (USL 7,5)
Size:	US 7–15 (40–49)/USL 5,5–USL 11,5 (36–43)
Torsion:	Stability Flex
Drop:	12 mm
Cushioning:	Full
Last:	Wide

SUSTAINABLE HIGHLIGHTS:

- The GORE-TEX® lining is bluesign® certified and meets Oeko-Tex® criteria.
- The Milspeed inner heel and toe reinforcements are made of 60% recycled plastic, out of which 11–12% are recycled nylon fishing nets.
- Midsole EVA contains 20% BLOOM® foam, which is partly made from algae from overgrown lakes.
- The RB9X® outsole contains 31% natural rubber and 15% recycled rubber.



10 kg



8%



10%



PYTHO6 BUGrip®

Trail and winter running.

BUGrip® outsole with 16 dynamic steel studs / Medium drop and cushion give great ground control /
Torsional rigidity and roomy toebox equal long distance comfort.

Pytho BUGrip® has been around for many years and combines features that many winter runners appreciate; medium drop, torsional rigidity and a roomy protective toebox. Light, yet durable, upper that can take a beating. The upper absorbs minimal water and has great water repellency.

Top-notch running capabilities with excellent ground control and a last designed for long distance training. The dynamic BUGrip® steel studs provide traction on a variety of surfaces, ranging from icy roads to wet roots.



Pytho6 M BUGrip® DarkBlue/Mint
H89001-9A

Pytho6 W BUGrip® DarkBlue/Mint
H89002-9A



Pytho6 M BUGrip® Lime/Mint
H89001-9D

Pytho6 W BUGrip® Lime/Mint
H89002-9D



Upper:	Bluesign® and GRS certified, 100 % recycled Polyester. Protective TPU mudguard.
Lining:	Quick dry bluesign®, solution dyed and 100 % recycled polyester mesh.
Insock:	Ortholite Hybrid®, bluesign®, solution dyed and 100 % recycled Polyester mesh.
Midsole:	Lightweight EVA with 20 % BLOOM® foam. TPU stabilizer.
Outsole:	BUGrip®, 16 carbide studs and rubber.
Weight:	320 gr (US 10)/270 gr (USL 7,5)
Size:	US 7 – 13 (40–47)/USL 5,5–USL 10,5 (36–42)
Torsion:	Stability Flex
Drop:	9 mm
Cushioning:	Medium
Last:	Medium

SUSTAINABLE HIGHLIGHTS:

- Upper with bluesign® 100 % recycled PET Polyester.
- Lining made from bluesign®, solution dyed recycled Polyester textile.
- Insock liner made of bluesign®, solution dyed, recycled Polyester mesh/Ortholite Hybrid®.
- Heel/Toe counters: Milspeed, 11–12 % recycled fishing nets, 45–48 % recycled polyethylene.
- Midsole compound made with 20 % BLOOM® foam EVA.



BLOOM



8,7 kg



26 %



9 %



PYTHO6 RB9X®

Trail running in all kind of terrain types and intensities.

RB9X® non-studded traction rubber / Light and low wet weight /
Medium drop and cushion give great ground control / Torsional rigidity and roomy toebox.

Pytho has been around for many years – this is the sixth generation! – and it combines features that many runners appreciate; medium drop, torsional rigidity and a spacious, protective toe box.

The Putek mesh upper is extremely light and durable, it also keeps the water absorption to a minimum resulting in almost none weight increase in wet conditions. A Mudguard around the entire shoe protects when the trail gets more technical.

The midsole adds torsional stability and the right level of support for trail running. The 9 mm drop hits the sweet spot for a shoe targeting light trail running and encourages high speed but also goes well with long recreational runs.

The outsole has the traction benchmark RB9X® rubber compound and a tread pattern made to grip also in muddy



Pytho6 M RB9X® Petroleum/Orange
H91001-0B



Pytho6 W RB9X® Petroleum/Aruba
H91002-0B



Upper:	Putek mesh (52 % Polyurethane, 40 % Polyamid, 8 % Polyester) solution dyed.
Lining:	Quick dry Polyester mesh. Bluesign®, solution dyed and 100 % recycled.
Insock:	BLOOM® foam EVA, lined with bluesign®, solution dyed textile made from 100 % recycled GRS certified PET Polyester textile.
Midsole:	Lightweight EVA with 20 % BLOOM® foam. TPU stabilizer.
Outsole:	RB9X® non-studded traction rubber.
Weight:	280 gr (US 10)/225 gr (USL 7,5)
Size:	US 7–13 (40–47)/USL 5,5–USL 11,5 (36–43)
Torsion:	Stability Flex
Drop:	9 mm
Cushioning:	Medium
Last:	Regular with roomy toebox.

SUSTAINABLE HIGHLIGHTS:

- Midsole EVA contains 20 % BLOOM® foam, which is partly made from algae from overgrown lakes.
- Heel/Toe counters: Milspeed, 11–12 % recycled fishing nets, 45–48 % recycled polyethylene.
- 15 % recycled rubber in outsole.
- The RB9X® outsole contains 31 % natural rubber and 15 % recycled rubber.





ACCELERITAS8 RB9X®

Orienteering, trail and off trail running, swim running, OCR running.

RB9X® non-studded traction rubber with tractor tire pattern /
Light and low wet weight / Low drop and superior ground control.

A new generation of the Acceleritas is here, targeting those that fancy minimalism and a must-have for the thrill-seeking runner venturing into swimrun, obstacle race or forest running! The upper is super soft and smooth, so light it feels like being barefoot. The water pickup is minimal, the drainage is excellent and hence the wet weight is almost as low as when it's dry. The heel cup is very soft and comfortable in order to reduce pressure at the Achilles tendon.

The midsole is very flexible and the terrain feel is remarkable thanks to the low profile of the sole. The shoe promotes the natural movement of the foot, it's like running in a

pair of socks, but socks that provide thermal and impact protection, and traction. The last has been updated with a slightly roomier toe box.

The outsole is designed with an aggressive pattern where dirt is steered away to the sides in diagonal channels, using the same principal as in tractor tires. The Acceleritas outsole is crowned with the jewel among sticky rubbers: RB9X®. This innovative rubber compound provides incredible traction on both wet and dry surfaces, without compromising the durability!



Acceleritas8 M RB9X® Orange/Black
B53101-0B



Acceleritas8 W RB9X® Ocean/Orange
B53102-0B



Upper:	Bluesign® PET Polyester, 100 % recycled and GRS certified. Protective TPU mudguard.
Lining:	Half lined with bluesign®, 100 % recycled, bluesign® and solution dyed, GRS certified PET Polyester.
Insock:	Removable. BLOOM® foam EVA lined with bluesign®, solution dyed and 100 % recycled GRS certified PET Polyester textile.
Midsole:	Lightweight EVA with 20 % BLOOM® foam, Rock Shield.
Outsole:	RB9X® non-studded traction rubber.
Weight:	248 gr (US 10)/198 gr (USL 7,5)
Size:	US 7–13 (40–47)/USL 5,5–USL 11,5 (36–43)
Torsion:	Easy Flex
Drop:	4 mm
Cushioning:	Responsive
Last:	Narrow racing fit with regular toebox.

SUSTAINABLE HIGHLIGHTS:

- Upper is made of bluesign®, solution dyed and 100 % recycled GRS certified PET Polyester.
- The Milspeed inner heel and toe reinforcements are made of 60 % recycled plastic, out of which 11–12 % are recycled nylon fishing nets.
- Midsole EVA contains 20 % BLOOM® foam, which is partly made from algae from overgrown lakes.
- The RB9X® outsole contains 31 % natural rubber and 15 % recycled rubber.



8 kg



26 %



12 %



SPIRIT8 OLX

Orienteering and off-trail running.

OLX studded traction with 14 studs / Light and low wet weight / Durable, protective without compromising comfort.

Spirit has been around for many years by now and still is the preferred shoe for many orienteers and off trail athletes, regardless if they are world champions or amateurs. Being the off trail benchmark doesn't mean you get to rest though, at least not if you want to stay ahead.

The key to success lies in the combination between low weight, smoothness and traction, but without compromising durability. The upper material is a bluesign® high abrasion recycled PET Polyester with a protective TPU mudguard, very smooth and with a thin and direct feeling. The low cut collar and the very comfy heel cup relieve the Achilles tendon from pressure.

The closed-cell foam of the heel cup and the upper Polyester fabric absorb very little water (maximum 20% increase when wet). The low sole profile and drop optimize ground control, but yet it's flexible to allow the foot to move naturally.

The last has been updated with a slightly roomier toe box. The outsole provides outstanding grip, with innovative diagonal ridge pattern, that is enhanced to amazing with 14 integrated OLX carbide tip studs.



Spirit8 M OLX Poison/Black
A98101-9B



Spirit8 W OLX Poison/Black
A98102-9B



Upper:	Bluesign® PET polyester, 100 % recycled and GRS certified. Protective TPU mudguard.
Lining:	Half lined with bluesign®, 100 % recycled, bluesign® and solution dyed, GRS certified PET Polyester.
Insock:	Removable. BLOOM® foam EVA lined with bluesign®, solution dyed and 100 % recycled GRS certified PET Polyester textile.
Midsole:	Lightweight EVA with 20 % BLOOM® foam, Rock Shield.
Outsole:	Rubber with 14 fixed OLX carbide steel tip studs.
Weight:	324 gr (US 10)/246 gr (USL 7,5)
Size:	US 7–13 (40–47)/USL 5,5–USL 11,5 (36–43)
Torsion:	Easy Flex
Drop:	4 mm
Cushioning:	Responsive
Last:	Narrow racing fit with regular toebox.

SUSTAINABLE HIGHLIGHTS:

- Upper is made of bluesign®, 100% recycled and GRS certified PET Polyester.
- The Milspeed inner heel and toe reinforcements are made of 60% recycled plastic, out of which 11–12% are recycled nylon fishing nets.
- Midsole EVA contains 20% BLOOM® foam, which is partly made from algae from overgrown lakes.



BLOOM



8 kg



19%



9%



SISU OLX

For racing and training on technical trails or off-trail.

OLX studded traction with 14 studs / Low drop and superior ground control / The BOA® Fit System.

Sisu OLX is built for high speed in tough terrain. The traditional lacing system has been replaced by the BOA® Fit System, guaranteeing a perfect fit and speeding up the process of taking the shoe on and off. The BOA® Fit System also improves the midfoot hold and support which in turn result in an improved running economy.

The upper material is a bluesign® high abrasion recycled PET Polyester with a protective TPU mudguard, very smooth and with a thin and direct feeling. Sisu has a low drop (4 mm), low sole profile and excellent ground control, ideal for technical trails and off trail-running. OLX is an Icebug technology with fixed studs, delivering the best possible traction on all surfaces nature has to offer.



Sisu M OLX Poison
A98105-9A



Sisu W OLX Poison
A98106-9A



Upper:	Bluesign® PET Polyester, 100 % recycled and GRS certified. Protective TPU mudguard.
Lining:	Half lined with bluesign®, 100 % recycled, bluesign® and solution dyed, GRS certified PET Polyester.
Lacing:	The BOA® Fit System.
Insock:	Removable. BLOOM® foam EVA lined with bluesign®, solution dyed and 100 % recycled GRS certified PET Polyester textile.
Midsole:	Lightweight EVA with 20 % BLOOM® foam, Rock Shield.
Outsole:	Rubber with 14 fixed OLX carbide steel tip studs.
Weight:	308 gr (US 10)/254 gr (USL 7,5)
Size:	US 7–13 (40–47)/USL 5,5–USL 11,5 (36–43)
Torsion:	Easy Flex
Drop:	4 mm
Cushioning:	Responsive
Last:	Narrow racing fit with regular toebox.

SUSTAINABLE HIGHLIGHTS:

- Upper is made of bluesign®, 100 % recycled and GRS certified PET Polyester.
- The Milspeed inner heel and toe reinforcements are made of 60 % recycled plastic, out of which 11–12 % are recycled nylon fishing nets.
- Midsole EVA contains 20 % BLOOM® foam, which is partly made from algae from overgrown lakes.



BLOOM



OUTDOOR

Dog walks and hiking demands reliable performance!

We create our Outdoor footwear with those demands top of mind; traction, comfort, durability and simplicity.

We have different insulation and traction features so that it's easy to find the perfect shoe for your level of activity.





OVERVIEW OUTDOOR



**HAZE MID
BUGRIP® GTX**

Midnight/CamaineRed
M: G18009-9B
W: G18010-9A



**HAZE MID
BIOSOLE™ GTX**

GreenStone/Orange
M: G93019-0A
W: G93020-0A



HAZE RB9X® GTX

Black/Granite
M: G93009-0F
W: G93010-0F



HAZE RB9X® GTX

Petroleum/Chestnut
M: G93009-0E



HAZE RB9X® GTX

Ash/SteelBlue
W: G93010-0G



**ROVER MID
RB9X® GTX**

Black/SlateGrey
M: D5457-0A



**ROVER MID
RB9X® GTX**

Black/Mint
W: D5458-0A



**ROVER MID RB9X®
GTX**

Blueberry
M: D5457-0C
W: D5458-0C



TIND RB9X®

PineGrey/Black
M: G93015-0A
W: G93016-0C



TIND RB9X®

Almond/Mint
M: G93015-0B
W: G93016-0B



**STAVRE BUGRIP®
GTX**

Black/Petroleum
M: F13084-9B



**STAVRE BUGRIP®
GTX**

Black/JadeMist
W: F13085-9A



**STAVRE2 MICHELIN
GTX**

Black/Petroleum
M: I33003-0A



**STAVRE2 MICHELIN
GTX**

Black/JadeMist
W: I33004-0A



NORRVIK BUGRIP®

Black
M: F13100-9A
W: F13101-9A



NORRVIK BUGRIP®

Mulberry
W: F13101-9B



NIRA2 BUGRIP®

Black

M: F13092-9A

W: F13093-9A



**PACE3
BUGRIP® GTX**

Black

M: F13051-9A

W: F13052-9A



**PACE3
BUGRIP® GTX**

Black/Petroleum

M: F13051-9D



**PACE3
BUGRIP® GTX**

Black/DarkHibiscus

W: F13052-9B



**PACE3
BUGRIP® GTX**

Black/Teal

W: F13052-9D



**PACE4
MICHELIN GTX**

Black

M: I33001-0A

W: I33002-0A



SPEED2 BUGRIP®

Black

M: F13088-9A

W: F13089-9A



SPEED2 BUGRIP®

Black/Petroleum

M: F13088-9B

W: F13089-9B



**TORNE2
BIOSOLE™ GTX**

PineGrey

M: D5815-0B

W: D5813-0B



**TORNE2
BUGRIP® GTX**

PineGrey

M: D5812-9B

W: D5813-9B



**ADAX REWOOL
BUGRIP®**

Black/Grey

M: H41001-9A

W: H41002-9A



**ADAX REWOOL
MICHELIN**

Black/Grey

M: H41001-0A

W: H41002-0B



**ADAX REWOOL
MICHELIN**

Coffee/Grey

M: H41001-0C

W: H41002-0C



HAZE MID BUGrip® GTX

Daily winter adventures.

BUGrip outsole with 16 dynamic steel studs / Waterproof GORE-TEX® membrane /
Fully cushioned and high comfort level.

Haze Mid BUGrip® GTX is a lightweight midcut shoe for winter multi-usage, from walks in the woods and speed-hiking to city everyday use. A modern shoe that focuses on comfort, made on a platform and with functional light materials coming from the running category. The GORE-TEX® membrane offers comfortable waterproofness.

Haze has torsional stability and a full cushioning. It's featured with protective mudguard all around the foot to protect against abrasion in tough terrain. The collar and tongue have comfortable and soft padding. The BUGrip® outsole provides reliable traction even in the most slippery winter conditions.



Haze M Mid BUGrip® GTX
Midnight/CarmineRed
G18009-9B



Haze W Mid BUGrip® GTX
Midnight/CarmineRed
G18010-9A



Upper:	Bluesign® Polyester, Low impact dyeing, TPU laminate.
Lining:	GORE-TEX® Extended Comfort. Bluesign® and Oeko-Tex® 100 certified textile.
Insock:	Ortholite Hybrid®, bluesign®, solution dyed and GRS certified 100 % recycled Polyester.
Midsole:	Lightweight EVA with 20% BLOOM® foam.
Outsole:	BUGrip®, 17 carbide studs and rubber.
Size:	US 7–13 (40–47) / USL 5,5–USL 10,5 (36–42)
Torsion:	Medium Flex
Drop:	7 mm
Cushioning:	Full
Last:	Medium

SUSTAINABLE HIGHLIGHTS:

- Upper is made of bluesign® Polyester textile, with Low impact dyeing.
- GORE-TEX® lining is bluesign®, solution dyed, GRS certified and meets Oeko-Tex® criteria.
- Insock liner made of bluesign®, solution dyed, recycled mesh / Ortholite Hybrid®.
- Heel/Toe counters: Milspeed, 11–12% recycled fishing nets, 45–48% recycled polyethylene.
- Midsole compound made of 20% BLOOM® foam EVA.



BLOOM



n/a yet



n/a yet



n/a yet



HAZE MID BIOSOLE™ GTX

Daily winter adventures.

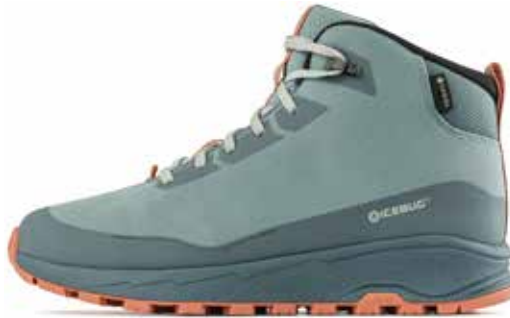
Biosole™, with 62% natural rubber / Waterproof GORE-TEX® membrane.
Fully cushioned and high comfort level.

Haze Mid Biosole GTX is a lightweight midcut shoe for winter multi-usage, from speed-hiking to everyday use in the city. A modern shoe that focuses on comfort, made on a platform and with functional light materials coming from the running category. The GORE-TEX® membrane offers comfortable waterproofness.

Haze has torsional stability and a full cushioning. It's featured with protective mudguard all around the foot to protect against abrasion in tough terrain. The collar and tongue have comfortable and soft padding. With the Biosole™ outsole the shoe provides traction and comfort even in cold temperatures.



Haze M Mid Biosole™ GTX GreenStone/Orange
G93019-0A



Haze W Mid Biosole™ GTX GreenStone/Orange
G93020-0A



Upper:	Bluesign® and 100 % recycled GRS certified PET Polyester. Protective TPU mudguard.
Lining:	GORE-TEX® Extended Comfort. Bluesign® and Oeko-Tex® 100 certified textile.
Insock:	Ortholite Hybrid®, bluesign®, solution dyed and GRS certified 100% recycled Polyester.
Midsol:	Lightweight EVA with 20% BLOOM® foam.
Outsole:	Biosole™, non-studded four-season rubber.
Size:	US 7–13 (40–47) / USL 5,5–USL 11,5 (36–43)
Torsion:	Medium
Drop:	7 mm
Cushioning:	Full
Last:	Medium

SUSTAINABLE HIGHLIGHTS:

- Upper is made of bluesign®, 100 % recycled and GRS certified PET Polyester.
- The Biosole™ outsole contains 62% natural rubber.
- The Milspeed inner heel and toe reinforcements are made of 60% recycled plastic, out of which 11–12% are recycled nylon fishing nets.
- Midsole EVA contains 20% BLOOM® foam, which is partly made from algae from overgrown lakes.



10 kg



20%



16%



HAZE RB9X® GTX

Trails for the adventurer.

RB9X® rubber compound / GORE-TEX® membrane / The BOA® Fit System.

Haze RB9X® GTX is a lightweight shoe for all weathers. It offers multi usage, from trail to speed-hiking and city. This is the trail shoe for the user that only wants to bring one pair of shoes when going on the next adventure, for all types of weather conditions and occasions. Running, hiking, walking in town – the perfect travel shoe.

This shoe is fully packed with features. The GORE-TEX® membrane offers comfortable waterproofness. The BOA® Fit System provides a perfect, precision fit – all day long.

It delivers more connectivity and stability and is built to perform in any environment. Haze has torsion stability and good cushioning. It's featured with protective lamination all around the foot to protect against abrasion in tougher terrain. The collar and tongue have comfortable padding. With the RB9X® rubber it performs on both dry and wet surfaces and together with the design of the outsole it provides reliable traction in various outdoor terrains.



Haze M RB9X® GTX Black/Granite
G93009-0F

Haze W RB9X® GTX Black/Granite
G93010-0F



Haze M RB9X® GTX Petroleum/Chestnut
G93009-0E



Haze W RB9X® GTX Ash/SteelBlue
G93010-0G



Upper:	Bluesign® and solution dyed Polyester, TPU laminate.
Laces:	The BOA® Fit System.
Lining:	Bluesign® 100 % recycled PET and solution dyed.
Membrane:	GORE-TEX® membrane.
Insock:	Ortholite Hybrid lined with bluesign® 100 % recycled and solution dyed PET Polyester.
Midsole:	Lightweight EVA with 20 % BLOOM® foam.
Outsole:	RB9X® with 15 % recycled rubber.
Size:	US 7–15 (40–49)/USL 5,5–USL 11,5 (36–43)
Torsion:	Medium
Drop:	7 mm
Cushioning:	Full
Last:	Medium

SUSTAINABLE HIGHLIGHTS:

- The GORE-TEX® lining is bluesign® and GRS certified, solution dyed, and meets Oeko-Tex® criteria.
- The Milspeed inner heel and toe reinforcements are made of 60 % recycled plastic, out of which 11–12 % are recycled nylon fishing nets.
- Midsole EVA contains 20 % BLOOM® foam, which is partly made from algae from overgrown lakes.
- The RB9X® outsole contains 31 % natural rubber and 15 % recycled rubber.



9 kg



25 %



11 %



ROVER MID RB9X® GTX

Speed hiking, adventurous walks or just everyday life.

RB9X® outsole / GORE-TEX® membrane / The BOA® Fit System / Mid-cut support and protection.

Be it an adventurous walk or a berry picking stroll in the woods, a mid cut shaft provides the stability and protection necessary to keep the feet happy also on very long days out in the nature. Based on the comfortable Pytho platform this is an exciting addition to the Icebug outdoor line.

Durable yet smooth bluesign® Polyester upper, GORE-TEX® membrane keeps water out and the foot dry. The BOA® Fit System secures perfect upper fit with even closure and

makes the handling very convenient. Soft thick padding around the heel counter. The high torsion and fully cushioned midsole, in combination with the ESS system, result in a stable shoe that protects from over-pronating. The unstudded outsole has a pattern that is designed to grip in mud as well as on rocks, together with the RB9X® rubber compound it provides traction also in winter temperatures.



Rover Mid M RB9X® GTX Black/SlateGrey
D5457-0A



Rover Mid W RB9X® GTX Black/Mint
D5458-0A



Rover Mid M RB9X® GTX Blueberry
D5457-0C
Rover Mid W RB9X® GTX Blueberry
D5458-0C



Upper:	Bluesign® and solution dyed Polyester.
Lining:	GORE-TEX® Extended Comfort. Bluesign® and Oeko-Tex® 100 certified textile.
Lacing:	The BOA® Fit System.
Insock:	Removable. Ortholite® Hybrid lined with solution dyed, bluesign® and 100 % recycled PET Polyester.
Midsole:	Lightweight EVA with 20 % BLOOM® foam.
Outsole:	RB9X® rubber with 15 % recycled rubber content.
Weight:	398 gr (US 10)/328 gr (USL 7,5)
Size:	US 7–15 (40–49)/USL 5,5–USL 11,5 (36–43)
Torsion:	Stability Flex
Drop:	12 mm
Cushioning:	Full
Last:	Medium

SUSTAINABLE HIGHLIGHTS:

- The Milspeed inner heel and toe reinforcements are made of 60 % recycled plastic, out of which 11–12 % are recycled nylon fishing nets.
- The GORE-TEX® Extended Comfort lining is bluesign® certified meets Oeko-Tex® 100 criteria.
- Midsole EVA contains 20 % BLOOM® foam, which is partly made from algae from overgrown lakes.
- The RB9X® outsole contains 31 % natural rubber and 15 % recycled rubber.



11 kg



7 %



9 %



TIND RB9X®

Day hikes and everyday life.

RB9X® non-studded traction rubber / Water resistant / Comfortable last and roomy toebox.

An active lifestyle requires footwear with the right properties. Tind RB9X® is a comfortable low-hiker, suitable for as well day hikes in the forest and mountains, as for walks in cities or the park. The suede upper ages beautifully and gets a good looking patina over

the years. The padded tongue and collar, the comfortable last together with the roomy toebox are all features much appreciated by the foot after long days in the outdoors. The RB9X® provides benchmark traction at both dry and wet surfaces.



Tind M RB9X® PineGrey/Black
G93015-0A

Tind W RB9X® PineGrey/Black
G93016-0C



Tind M RB9X® Almond/Mint
G93015-0B

Tind W RB9X® Almond/Mint
G93016-0B



Upper:	Suede leather / recycled rubber mudguard.
Lining:	100% recycled GRS certified PET Polyester.
Insock:	OrthoLite® Hybrid, removable.
Midsole:	Lightweight EVA with 20% BLOOM® foam.
Outsole:	RB9X® non-studded traction rubber.
Size:	US 7–13 (40–47)/USL 5,5–USL 11,5 (36–43)
Last:	Comfort fit last with roomy toebox.

SUSTAINABLE HIGHLIGHTS:

- Upper is made of suede leather that is gold rated by LWG.
- Midsole EVA contains 20% BLOOM® foam, which is partly made from algae from overgrown lakes.
- The Milspeed inner heel and toe reinforcements are made of 60% recycled plastic, out of which 11–12% are recycled nylon fishing nets.
- The RB9X® outsole contains 31% natural rubber and 15% recycled rubber.





STAVRE BUGrip® GTX

Light hiking in all winter weather.

Studded BUGrip® outsole with 16 dynamic studs / Waterproof GORE-TEX® membrane / The BOA® Fit System.

Stavre is the perfect midcut boot for light winter hikes. Carbide studded BUGrip® outsole has 16 steel studs that provide reliable traction even on pure ice. The waterproof GORE-TEX® membrane keeps the slush out and the feet dry. The shaft and the supportive midsole results in a stable boot suitable for light hiking.

The BOA® Fit System provides a precision fit without any pressure points. The wide last, Ortholite Hybrid® insock and smooth liner keep the feet happy on long active winter days.



Stavre M BUGrip® GTX Black/Petroleum
F13084-9B



Stavre W BUGrip® GTX Black/JadeMist
F13085-9A



Upper:	Bluesign®, solution dyed and 100% GRS certified PET Polyester. Protective TPU mudguard.
Lacing:	The BOA® Fit system.
Membrane:	GORE-TEX®
Lining:	GORE-TEX® Performance Comfort. Oeko-Tex® 100 certified textile.
Insock:	Removable Ortholite® Hybrid lined with solution dyed and bluesign® certified textile made from 100% recycled PET Polyester textile.
Midsole:	EVA with 20% BLOOM® foam.
Outsole:	20% recycled Rubber with BUGrip® 16 carbide tip studs.
Size:	US 7–12, 13 (40–47) / USL 5,5–USL 10,5 (36–42)
Last:	Wide

SUSTAINABLE HIGHLIGHTS:

- Upper made with bluesign®, solution dyed and 100% recycled GRS certified Polyester.
- GORE-TEX® Performance Comfort lining that meets Oeko-Tex® 100 standard.
- Removable insole from Ortholite Hybrid®, lined with bluesign®, 100% recycled and solution dyed PET Polyester.
- Midsole compound made with 20% BLOOM® foam EVA.
- 20% recycled rubber in the outsole.
- Milspeed inner heel and toe reinforcements made of 60% recycled plastic. 11–12% is recycled nylon fishing nets.



11,1 kg



27%



10%



STAVRE2 MICHELIN GTX

Light hiking in fall, winter and spring.

Non-studded Michelin Wic outsole / Waterproof GORE-TEX® membrane / The BOA® Fit System.

A midcut boot for light fall and winter hikes. The non-studded Michelin Winter Compound rubber keeps its excellent traction properties also in low temperatures, when normal rubber stiffens, and makes winter hiking comfortable. The tread pattern is upgraded with deeper lugs for better traction in mud and snow. The waterproof GORE-TEX® membrane keeps the slush out and the feet dry. The shaft and the sup-

portive midsole results in a stable boot suitable for light hiking. The BOA® Fit System provides custom comfort with smooth, even closure and no pressure points. The wide last, Ortholite Hybrid® insock and smooth liner keep the feet happy on long active winter days.



Stavre2 M Michelin GTX Black/Petroleum
I33003-0A



Stavre2 W Michelin GTX Black/JadeMist
I33004-0A



Upper:	Bluesign®, solution dyed and 100 % GRS certified PET Polyester. Protective TPU mudguard.
Lacing:	The BOA® Fit System.
Lining:	GORE-TEX® Extended Comfort. Bluesign® and Oeko-Tex 100 certified textile.
Insock:	Ortholite Hybrid®, bluesign®, solution dyed and recycled Polyester mesh.
Midsole:	Lightweight EVA with 20 % BLOOM® foam, TPU heel stabilizer.
Outsole:	Rubber, Michelin Winter Compound.
Size:	US 7 – 12, 13 (40–47)/USL 5,5 – USL 10,5 (36–42)

SUSTAINABLE HIGHLIGHTS:

- Upper is made of bluesign®, solution dyed and 100% recycled GRS certified PET Polyester.
- The GORE-TEX® Extended Comfort lining is bluesign® certified and meets the STANDARD 100 by OEKO-TEX®.
- The Milspeed inner heel and toe reinforcements are made of 60% recycled plastic, out of which 11–12% are recycled nylon fishing nets.
- The OrthoLite® Hybrid™ insole blends 5% recycled rubber and 15% production waste foam for 20% eco-content. It is lined with bluesign® 100% recycled, GRS certified and solution dyed PET Polyester.
- Midsole EVA contains 20% BLOOM® foam, which is made from algae from overgrown lakes.



x kg



x %



x %



NORRVIK BUGrip®

Hiking and walking.

BUGrip® outsole with 13 dynamic steel studs / Water resistant upper / The BOA® Fit System.

Light as a sneaker, warm as a winter boot and with a level of traction that only Icebug can deliver. Norrvik is designed for being versatile, equipped with the BOA® Fit System for effortless and precision fit, targeting activities such as dog walking or playing with the kids on that first snowy day. The toned down bluesign® Polyester textile upper is

durable and easy to maintain and it has reflective trim for added visibility on dark winter walks. The fleece lining is warm and comfy, and together with the medium last and toe rocker it means great fit and walking capacity. Stable midsole with just the right amount of support. Studded BUGrip® outsole provides reliable traction in all winter conditions.



Norrvik M BUGrip® Black
F13100-9A
Norrvik W BUGrip® Black
F13101-9A



Norrvik W BUGrip® Mulberry
F13101-9B



Upper:	RipStop textile made from bluesign®, solution dyed, 100% recycled GRS certified PET Polyester textile/ProtecPU.
Lining:	Bluesign®, solution dyed and 100% recycled PET polyester fleece.
Lacing:	The BOA® Fit System.
Insock:	BIO-ECO NU-POLI GRS certified 70% recycled polyurethane, lined with solution dyed Timber mesh of 100% GRS certified recycled PET.
Midsole:	BLOOM® foam EVA with ESS arch stabilizer.
Outsole:	Rubber with 20% recycled rubber content and 13 BUGrip® carbide tip studs.
Size:	US 7–12, 13 (40–47)/USL 5,5–10,5 (36–42)
Last:	Wide comfort fit walking last.

SUSTAINABLE HIGHLIGHTS:

- Midsole compound made from 20% BLOOM® foam EVA.
- Upper RipStop textile made from bluesign® certified, solution dyed 100% recycled GRS certified PET Polyester textile.
- Outsole made from 20% recycled rubber.
- Insock made of BIO-ECO NU-POLI GRS certified 70% recycled polyurethane, lined with solution dyed Timbermesh of 100% GRS certified recycled PET.
- Milspeed inner heel and toe reinforcements made of 60% recycled plastic. 11–12% is recycled nylon fishing nets.
- Lining made of 100% recycled PET Polyester, bluesign® certified and solution dyed fleece.



BLOOM



n/a yet



n/a yet



n/a yet



NIRAK2 BUGrip®

Hiking and walking.

BUGrip® outsole with 13 dynamic steel studs / Water repellent upper / Shaft height and fleece lining for winter use.

Light as a sneaker, warm as a winter boot and with a level of traction that only Icebug can deliver. Nirak is designed for being versatile, targeting activities from dog walking to playing with the kids on that first snowy day. The toned down bluesign® Polyester textile upper is durable and easy to maintain and it has reflective trim for added visibility

on dark winter walks. The fleece lining is warm and comfy, and together with the medium last and toe rocker it means great fit and walking capacity. Stable midsole with just the right amount of support. Studded BUGrip® outsole provides reliable traction in all winter conditions.



Nirak2 M BUGrip® Black
F13092-9A



Nirak2 W BUGrip® Black
F13093-9A



Upper:	RipStop textile made from bluesign®, solution dyed, 100% recycled. PET Polyester textile/ProtecPU.
Lining:	Bluesign®, solution dyed and 100% recycled PET Polyester fleece.
Insock:	BIO-ECO NU-POLI GRS certified 70% recycled polyurethane, lined with solution dyed Timber-mesh of 100% GRS certified recycled PET.
Midsole:	20% BLOOM® foam EVA with ESS arch stabilizer
Outsole:	Rubber with 20% recycled rubber content and 13 BUGrip® carbide tip studs.
Size:	US 7–12, 13 (40–47) / USL 5,5–USL 10,5 (36–42)
Last:	Wide comfort fit walking last.

SUSTAINABLE HIGHLIGHTS:

- Midsole compound made from 20% BLOOM® foam EVA.
- Upper RipStop textile made from bluesign® certified, solution dyed 100% recycled GRS certified PET Polyester textile.
- Outsole made from 20% recycled rubber.
- Insock made of BIO-ECO NU-POLI GRS certified 70% recycled polyurethane, lined with solution dyed Timber-mesh of 100% GRS certified recycled PET.
- Milspeed inner heel and toe reinforcements made of 60% recycled plastic. 11–12% is recycled nylon fishing nets.
- Lining made of 100% recycled PET Polyester, bluesign® certified and solution dyed fleece.



BLOOM



9,7 kg



39%



11%



PACE3 BUGrip® GTX

Hiking and walking.

BUGrip® outsole with 16 dynamic steel studs / Waterproof GORE-TEX® membrane / Wide ergonomic last.

Pace is the perfect boot for those looking for walking comfort, insulation and mid cut stability. The upper material is a Ripstop textile that is very easy to maintain and has reflective areas for increased visibility. The mudguard has been slightly updated. The 100% waterproof and breathable GORE-TEX® membrane ensures that the feet stay dry and comfortable.

BUGrip® outsole with dynamic studs. The design has a clean and sporty look which goes perfectly well with the ambition of the shoe: to provide traction, shelter and warmth for those who want to keep on being active all year long.



Pace3 M BUGrip® GTX Black
F13051-9A
Pace3 W BUGrip® GTX Black
F13052-9A



Pace3 W BUGrip® GTX Black/DarkHibiscus
F13052-9B



Pace3 M BUGrip® GTX Black/Petroleum
F13051-9D



Pace3 W BUGrip® GTX Black/Teal
F13052-9D



Upper:	Bluesign® certified solution dyed textile 100 % GRS certified PET Polyester. Protective TPU mudguard.
Lining:	GORE-TEX® insulated comfort with Oeko-Tex® 100 certified textile.
Insock:	Ortholite Hybrid®, bluesign®, solution dyed and GRS certified 100% recycled Polyester.
Midsole:	Lightweight EVA with 20% BLOOM® foam, ESS stabilizer.
Outsole:	20% recycled Rubber with BUGrip® 16 carbide tip studs.
Size:	US 7–15 (40–49)/USL 5,5–USL 10,5 (36–42)

SUSTAINABLE HIGHLIGHTS:

- Upper made with bluesign®, solution dyed and 100 % recycled GRS certified Polyester.
- GORE-TEX® Insulated Comfort lining that meets Oeko-Tex® standard.
- Removable insole from Ortholite Hybrid®, lined with bluesign®, 100 % recycled and solution dyed Polyester.
- Midsole compound made from 20% BLOOM® foam EVA.
- 20% recycled rubber in the outsole.
- Milspeed inner heel and toe reinforcements made of 60 % recycled plastic. 11–12 % is recycled nylon fishing nets.



BLOOM



11,9 kg



28%



8%



PACE4 MICHELIN GTX

Hiking and walking.

Non-studded MICHELIN outsole / Waterproof GORE-TEX® membrane / Wide ergonomic last.

Pace is the perfect boot for those looking for walking comfort, insulation and mid cut stability. The upper material is a Ripstop textile that is very easy to maintain and has reflective areas for increased visibility. Protective mudguard. The 100% waterproof and

breathable GORE-TEX® membrane ensures that the feet stay dry and comfortable. Non-studded Michelin outsole works excellent in low temperatures and the tread pattern provides traction in both snow and mud.



Pace4 M Michelin GTX Black
I33001-0A



Pace4 W Michelin GTX Black
I33002-0A



Upper:	Bluesign® PET Polyester, solution dyed, 100% recycled and GRS certified. Protective TPU mudguard.
Lining:	GORE-TEX® Insulated comfort.
Insock:	OrthoLite® Hybrid®, lined with 100% recycled GRS certified PET Polyester, which is bluesign® certified and solution dyed. Removable.
Midsole:	Lightweight EVA with 20% BLOOM foam, ESS stabilizer.
Outsole:	MICHELIN Winter Compound rubber.
Size:	US 7–12, 13 (40–47)/USL 5,5–USL 10,5 (36–42)

SUSTAINABLE HIGHLIGHTS:

- Upper is made of bluesign®, solution dyed and 100% recycled GRS certified PET Polyester.
- The GORE-TEX® Insulated Comfort lining meets the STANDARD 100 by OEKO-TEX®.
- The Milspeed inner heel and toe reinforcements are made of 60% recycled plastic, out of which 11–12% are recycled nylon fishing nets.
- Midsole EVA contains 20% BLOOM® foam, which is made from algae from overgrown lakes.



x kg



x%



x%



SPEED2 BUGrip®

Hiking and walking.

BUGrip® outsole with 16 dynamic steel studs / Keeps the feet dry / Wide ergonomic last.

One of the all-time most used and sold Icebug styles, now with updated design. Perfect for those not wanting to take any risks in harsh winter conditions, no matter if you're the average Sunday walker or a Canadian/Norwegian mail deliverer who always needs to deliver. Mid cut height gives the ankle support you need. EVA stabilizer and lots of fore-foot rocker gives stable ride platform for fast and healthy feet.

3M reflective trim for added visibility on dark winter walks. Insulation provides comfort in low temperatures, perfect for enthusiastic fitness walkers so they don't get too hot and sweaty. The BUGrip® sole provides traction and enables outdoor activities regardless how slippery it is.



Speed2 M BUGrip® Black
F13088-9A

Speed2 W BUGrip® Black
F13089-9A



Speed2 M BUGrip® Black/Petroleum
F13088-9B

Speed2 W BUGrip® Black/Petroleum
F13089-9B



Upper:	RipStop textile made from bluesign® certified, solution dyed 100% recycled GRS certified PET Polyester textile / ProtecPU.
Membrane:	BUGdri® made from 50% recycled GRS certified PET Polyester.
Lining:	100% recycled GRS certified PET Polyester, bluesign® and solution dyed fleece.
Insock:	Ortholite® Hybrid® lined with 100% recycled GRS certified PET Polyester, bluesign® certified and solution dyed mesh.
Midsole:	BLOOM® foam EVA with ESS arch stabilizer
Outsole:	Rubber with 20% recycled content and 16 BUGrip® carbide tip studs.
Size:	US 7–12, 13 (40–47)/USL 5,5–USL 10,5 (36–42)
Last:	Wide comfort fit walking last.

SUSTAINABLE HIGHLIGHTS:

- Midsole compound made from 20% BLOOM® foam EVA.
- Lining made of 100% recycled GRS certified PET Polyester, bluesign® certified and solution dyed fleece.
- Upper RipStop textile made from bluesign® certified, solution dyed 100% recycled GRS certified PET Polyester textile.
- Insock made in Ortholite® Hybrid® lined with 100% recycled GRS certified PET Polyester, bluesign® certified and solution dyed mesh.
- Outsole with 20% recycled rubber content.
- BUGdri® membrane made from 50% recycled GRS certified PET Polyester.
- Heel and toe inner reinforcements are made from 60% recycled fishnets nylon.



BLOOM



9,8 kg



33%



10%



TORNE2 BIOSOLE™ GTX

Cold snowy conditions.

Biosole™, non-studded four-season rubber / Waterproof GORE-TEX® membrane /
Insulated and prepared for very cold winter days.

Torne is the warmest shoe in the Icebug collection. The high shaft is insulated with wool and has a waterproof GORE-TEX® membrane. It provides stability and shelter from cold conditions and together with the thick wool lined insole it will keep the feet warm in very low temperatures during normal activity. The upper is made of Suede leather and

ripstop Polyester and has a PU mudguard that goes all the way around the shoe to give extra durability and protection. Full front lacing for easy access and fit adjustment. The Biosole™ compound maintains its softness also in very low temperatures, a property that enables reliable non-studded winter traction.



Torne2 M Biosole™ GTX PineGrey
D5815-0B



Torne2 W Biosole™ GTX PineGrey
D5813-0B



Upper:	Suede leather (LWG gold-rated) and Ripstop Polyester, bluesign® and solution dyed recycled PET textile. Protective TPU mudguard.
Lining:	Gore-TEX® Insulated comfort.
Insock:	BLOOM® foam EVA lined with Woolpower® recycled merino wool felt. Removable.
Midsole:	Lightweight EVA with 20% BLOOM® foam.
Outsole:	Biosole™ outsole, with 62% natural rubber.
Size :	US 7–12, 13 (40–47)/USL 5,5–USL 10,5 (36–42)

SUSTAINABLE HIGHLIGHTS:

- Insole is made of BLOOM® foam EVA and has a lining of recycled wool.
- Upper is made of suede leather that is gold rated by LWG.
- Milspeed inner heel and toe reinforcements made of 60% recycled plastic. 11–12% is recycled nylon fishing nets.
- Biosole™ outsole, with 62% natural rubber.



x kg



x%



x%



TORNE2 BUGrip® GTX

Cold snowy conditions.

BUGrip® outsole with 14 dynamic steel studs / Waterproof GORE-TEX® membrane /
Insulated and prepared for very cold winter days.

Torne is the warmest shoe in the Icebug collection. The high shaft is insulated with wool and has a waterproof GORE-TEX® membrane. It provides stability and shelter from cold conditions and together with the thick wool lined insole it will keep the feet warm in very low temperatures during normal activity. The upper is made of Suede leather and

ripstop Polyester and has a PU mudguard that goes all the way around the shoe to give extra durability and protection. Full front lacing for easy access and fit adjustment. BUGrip® outsole with fourteen dynamic studs provides safe winter traction.



Torne2 M BUGrip® GTX PineGrey
D5812-9B



Torne2 W BUGrip® GTX PineGrey
D5813-9B



Upper:	Suede leather (LWG gold-rated) and Ripstop Polyester, bluesign® and solution dyed recycled PET textile. Protective TPU mudguard.
Lining:	Gore-TEX® Insulated comfort.
Insock:	BLOOM® foam EVA lined with Woolpower® recycled merino wool felt. Removable.
Midsole:	Lightweight EVA with 20% BLOOM® foam.
Outsole:	Rubber with BUGrip® carbide steel tip studs.
Size :	US 7–12, 13 (40–47)/USL 5,5–USL 10,5 (36–42)

SUSTAINABLE HIGHLIGHTS:

- Insole is made of BLOOM® foam EVA and has a lining of recycled wool.
- Upper is made of suede leather that is gold rated by LWG.
- Milspeed inner heel and toe reinforcements made of 60% recycled plastic. 11–12% is recycled nylon fishing nets.
- 20% recycled rubber outsole.



x kg



x%



x%



ADAK REWOOL BUGrip®

Winter walking and hiking.

Highly insulated for very low temperatures / BUGrip® outsole / BUGdri® membrane.

Adak is a true winter adventure boot, with timeless Scandinavian design. High shaft in felted recycled wool and Oily Nubuck leather. The BUGdri® membrane keeps the feet dry and the Primaloft® Bio insulation keeps them warm. The Terry fleece lining adds further warmth and in combination with the wide last the comfort level is very high.

Full lacing enables fine tuning the fit as preferences may vary depending on the activity. The shaft and the supportive midsole results in a stable boot suitable for long walks in all kinds of winter weather, add to that a studded BUGrip® outsole and it's no wonder why Adak is the number one winter boot choice.



Adak ReWool M BUGrip® Black / Grey
H41001-9A



Adak ReWool W BUGrip® Black / Grey
H41002-9A



Upper:	DriTan™ oily Nubuck leather and wool.
Insulation:	100g/sqm Primaloft® Bio, in vamp and toe Primaloft® Bio 400g/sqm.
Membrane:	BUGdri® made from 50 % recycled GRS certified PET Polyester.
Lining:	Bluesign®, solution dyed Terry Fleece.
Insock:	BLOOM® foam EVA lined with Woolpower® recycled merino wool felt.
Midsole:	EVA with 20 % BLOOM® foam.
Outsole:	20 % recycled Rubber with 17 BUGrip® carbide tip studs.
Size:	US 7–13 (40–47)/USL 5,5–USL 10,5 (36–42)
Last:	Wide comfort fit last with roomy toebox.

SUSTAINABLE HIGHLIGHTS:

- DriTan™ oily Nubuck leather.
- Primaloft® Bio, a recycled and biodegradable insulation material.
- Shaft in recycled non-mulesing felted wool made with scraps from Woolpower's production of clothes. Minimum 45 % wool content.
- Lining made of bluesign® and solution dyed fleece.
- BLOOM® foam EVA insock lined with Woolpower recycled merino wool felt.
- EVA midsole with 20 % BLOOM® foam.
- Outsole with 20 % recycled rubber.
- BUGdri® membrane is made from 50 % recycled PET Polyester (GRS certified).
- Milspeed inner heel and toe reinforcements made of 60 % recycled plastic. 11–12 % is recycled nylon fishing nets.



Woolpower
OSTERSUND

BLOOM



20,7 kg



27%



37%



ADAK REWOOL MICHELIN

Winter walking and hiking.

Non-studded Michelin Winter Compound outsole / Highly insulated for very low temperatures / Sustainable materials / BUGdri® membrane.

Adak is a true winter adventure boot, with timeless Scandinavian design. High shaft in felted recycled wool and Oily Nubuck leather. The BUGdri® membrane keeps the feet dry and the Primaloft® Bio insulation keeps them warm. The Terry fleece lining adds further warmth and in combination with the wide last the comfort level is very high.

Full lacing enables fine tuning the fit as preferences may vary depending on the activity. The shaft and the supportive midsole results in a stable boot suitable for long walks in all kinds of winter weather. The non-studded Michelin rubber keeps its excellent traction properties also in low temperatures and makes winter walks enjoyable.



Adak ReWool M Michelin Black / Grey
H41001-0A

Adak ReWool W Michelin Black / Grey
H41002-0B



Adak ReWool W Michelin Coffee / Grey
H41002-0C

Adak ReWool M Michelin Coffee / Grey
H41001-0C



Upper:	DriTan™ oily Nubuck leather and wool.
Insulation:	100g/sqm Primaloft® Bio, in vamp and toe Primaloft® Bio 400g/sqm.
Membrane:	BUGdri® made from 50 % recycled GRS certified PET Polyester.
Lining:	Bluesign®, solution dyed Terry Fleece.
Insock:	BLOOM® foam EVA lined with Woolpower® recycled merino wool felt.
Midsole:	EVA with 20 % BLOOM® foam.
Outsole:	Michelin rubber outsole with FiberLite base (reducing 20 % rubber use).
Size:	US 7–13 (40–47)/USL 5,5–USL 10,5 (36–42)
Last:	Wide comfort fit last with roomy toebox.

SUSTAINABLE HIGHLIGHTS:

- DriTan™ oily Nubuck leather.
- Primaloft® Bio, a recycled and biodegradable insulation material.
- Shaft in recycled non-mulesing felted wool made with scraps from Woolpower's production of clothes. Minimum 45 % wool content.
- Lining made of bluesign® and solution dyed fleece.
- BLOOM® foam EVA insock lined with Woolpower recycled merino wool felt.
- EVA midsole with 20 % BLOOM® foam.
- Michelin rubber outsole with FiberLite base (reducing 20 % rubber use).
- BUGdri® membrane is made from 50 % recycled PET Polyester (GRS certified).
- Milspeed inner heel and toe reinforcements made of 60 % recycled plastic. 11–12 % is recycled nylon fishing nets.



SOLES
BY
MICHELIN

Woolpower®
ÖSTERSUND

BLOOM



20,5 kg



23%



44%

A close-up photograph of several pairs of feet wearing different styles of winter boots, including brown leather boots and black rubber boots, standing on a snowy surface. The boots are shown from a low angle, emphasizing their tread and design.

LIFESTYLE

With our Lifestyle products you can move relaxed and freely in any weather condition.

With timeless Scandinavian design and carefully selected materials we create warm and comfortable footwear built to last.





OVERVIEW LIFESTYLE



METRO2 NUBUCK BUGRIP®

Black
M: F13104-9A
W: F13105-9A



METRO2 NUBUCK BUGRIP®

Coffee
M: F13104-9B
W: F13105-9B



METRO2 BUGRIP®

Black
M: F13003-9A
W: F13004-9A



METRO2 BUGRIP®

Mulberry
W: F13004-9B



METRO2 BUGRIP®

Hazel
W: F13004-9G



METRO2 BUGRIP®

PineGrey
W: F13004-9H



METRO3 MICHELIN

Black
M: I33005-0A
W: I33006-0A



BODA BUGRIP®

Black
M: H41015-9A
W: H41016-9A



BODA BUGRIP®

Hazel
M: H41015-9B
W: H41016-9B



BODA MICHELIN

M: H41015-0A
W: H41016-0A



BODA MICHELIN

Hazel
M: H41015-0B
W: H41016-0B



IVALO4 BUGRIP®

Black
M: F13102-9A
W: F13103-9A



IVALO4 BUGRIP®

Mulberry
W: F13103-9B



GROVE REWOOL BUGRIP®

Black/Grey
W: G09006-9A



GROVE REWOOL BUGRIP®

Coffee/Grey
W: G09006-9B



GROVE REWOOL MICHELIN®

Black/Grey
W: G09006-0A



GROVE REWOOL MICHELIN

Coffee/Grey
W: G09006-0B

OVERVIEW LIFESTYLE



**LARVIK HEMP
BIOSOLE™**

TrueBlack
H84003-0A



**LARVIK HEMP
BIOSOLE™**

Coffee/ Black
H84003-0B



**LARVIK HEMP
BIOSOLE™**

PineGrey/ Black
H84003-0C



DALA BIOSOLE™

Black
I01001-0A



DALA BIOSOLE™

Espresso
I01001-0B



DALA BIOSOLE™

Burgundy
I01001-0C



**EIDE REWOOL
BIOSOLE™**

Dark Grey
F88027-0A



**EIDE REWOOL
BIOSOLE™**

PineGreen
F88027-0D



ELI RB9X®

Black
F88025-0A



ELI RB9X®

SteelBlue
F88025-0B



ELI RB9X®

Turquoise
F88025-0D



ELI RB9X®

Olive
F88025-0E



ELI RB9X®

PearlWhite
F88025-0G



ELI RB9X®

Mustard
F88025-0J



**AURA REWOOL
RB9X®**

WhiteSand
I23003-0B



METRO2 NUBUCK BUGrip®

Winter walking.

BUGrip® outsole with 16 dynamic steel studs / Water resistant upper/
Great walking comfort / High quality leather upper.

Classic version of the Icebug bestseller Metro BUGrip®. Achilles pull loop and a medial zipper make Metro easy to take on and off. The carbide studded BUGrip® outsole gives confidence on ice but walks completely civilized on pavement and other surfaces.

The Nubuck leather upper ages beautifully and is easy to take care off. Ergonomic platform with ESS stabilizer and lots of forefoot rocker results in a foot friendly boot with outstanding walking properties.



Metro2 Nubuck M BUGrip® Black
F13104-9A



Metro2 Nubuck M BUGrip® Coffee
F13104-9B

Metro2 Nubuck W BUGrip® Black
F13105-9A

Metro2 Nubuck W BUGrip® Coffee
F13105-9B



Upper:	DriTan™ Leather / ProtecPU mudguard.
Lining:	ReWool, made of 70% recycled wool and 30% recycled PET.
Insock:	OrthoLite® HybridPlus-Bio™. Removable.
Midsole:	EVA with 20% BLOOM® foam. ESS arch stabilizer.
Outsole:	20% recycled Rubber with BUGrip® 16 carbide tip studs.
Size:	US 7–13 (40–47) / USL 5,5–USL 10,5 (36–42)
Last:	Wide comfort fit walking last

SUSTAINABLE HIGHLIGHTS:

- Upper is made of DriTan Leather, with LWG gold standard, from Danish farms. SPOOR makes it traceable all the way back to the farm.
- Midsole EVA contains 20% BLOOM® foam, which is made from algae from overgrown lakes.
- Milspeed inner heel and toe reinforcements made of 60% recycled plastic. 11–12% is recycled nylon fishing nets.
- The BUGrip® outsole contains 20% recycled rubber.



x kg



x%



x%



METRO2 BUGrip®

Winter walking.

BUGrip® outsole with 16 dynamic steel studs / Water repellent upper / High walking comfort.

Urban look with outdoor function. Warm, comfy, convenient with medial 8mm zipper and soft elastic top cuff. Carbide studded outsole gives confidence on ice but walks completely civilized on pavement and other surfaces. Full suede upper wraps the foot for comfortable fit and clean cut look. Elastic top collar makes for easy entrance and no abrasion when walking.

Achilles pull loop and grippy silicone zipper pull tab make Metro easy to take on and off. Ergonomic platform with ESS stabilizer and lots of forefoot rocker results in a foot friendly boot with outstanding walking properties.



Metro2 M BUGrip® Black
F13003-9A

Metro2 W BUGrip® Black
F13004-9A



Metro2 W BUGrip® Mulberry
F13004-9B



Metro2 W BUGrip® Hazel
F13004-9G



Metro2 W BUGrip® PineGrey
F13004-9H



Upper:	Suede leather / ProtecPU mudguard.
Lining:	100% recycled GRS certified PET Polyester. Bluesign® certified and solution dyed fleece.
Insock:	Ortholite® Hybrid® lined with 100% recycled GRS certified PET Polyester, bluesign® certified and solution dyed mesh.
Midsole:	EVA with 20% BLOOM® foam. ESS arch stabilizer.
Outsole:	20% recycled Rubber with BUGrip® 16 carbide tip studs.
Size:	US 7–12, 13 / USL 5.5–10.5
Last:	Wide comfort fit walking last.

SUSTAINABLE HIGHLIGHTS:

- Midsole compound made from 20% BLOOM® foam EVA.
- Lining made of 100% recycled GRS certified PET Polyester, bluesign® and solution dyed fleece.
- Insock made in Ortholite® Hybrid® lined with 100% recycled GRS certified PET Polyester, bluesign® certified and solution dyed mesh.
- Outsole with 20% recycled rubber.
- Milspeed inner heel and toe reinforcements made of 60% recycled plastic. 11–12% is recycled nylon fishing nets.



BLOOM



15,2 kg



19%



10%



METRO3 MICHELIN

Winter walking.

Non-studded MICHELIN outsole / Water resistant upper / High walking comfort.

Urban look with outdoor function. Warm, comfy, convenient with medial zipper and soft elastic top cuff. The Michelin Wic rubber outsole gives confidence on ice but walks completely civilized on pavement and other surfaces, the deep lugs provide traction in snowy conditions. Full suede upper wraps the foot for comfortable fit and clean cut

look. Elastic top collar makes for easy entrance and no abrasion when walking. Achilles pull loop and grippy silicone zipper pull tab make Metro easy to take on and off. Running shoe platform with ESS stabilizer and lots of forefoot rocker results in a foot friendly boot with outstanding walking properties.



Metro3 M Michelin Black
I33005-0A



Metro3 W Michelin Black
I33006-0A



Upper:	Suede leather (LWG gold-rated)/ protective PU mudguard.
Lining:	Fleece. 100 % recycled, bluesign® and solution dyed, GRS certified PET Polyester textile.
Insock:	OrthoLite® Hybrid®, lined with 100 % recycled GRS certified PET Polyester, which is bluesign® certified and solution dyed. Removable.
Midsole:	Lightweight EVA with 20 % BLOOM® foam, ESS stabilizer.
Outsole:	MICHELIN Winter Compound rubber.
Size:	US 7–13 (40–47)/USL 5,5–USL 10,5 (36–42)
Las:	Wide comfort fit with roomy toebox.

SUSTAINABLE HIGHLIGHTS:

- Midsole EVA contains 20 % BLOOM® foam, which is made from algae from overgrown lakes.
- Lining made of 100 % recycled GRS certified PET Polyester, bluesign® and solution dyed fleece.
- The Milspeed inner heel and toe reinforcements are made of 60 % recycled plastic, out of which 11–12 % are recycled nylon fishing nets.
- The OrthoLite® Hybrid™ insole blends 5 % recycled rubber and 15 % production waste foam for 20 % eco-content. It is lined with bluesign® 100 % recycled, GRS certified and solution dyed PET Polyester.



x kg



x%



x%



BODA BUGrip®

Winter walking and everyday active lifestyle.

BUGrip® outsole with 17 dynamic steel studs / BUGdri® membrane /
Primaloft® Bio insulation / Great walking comfort.

An everyday lifestyle boot! Suede leather upper, a protective mudguard and a BUGdri® membrane keep slush out and the feet dry. A side zipper and the pull-on finger loops at back and front make Boda easy to put on. The Primaloft® Bio insulation and fleece lining keep the feet warm and together with the roomy last and toe box a healthy foot climate

is created. The midsole stability and roll have excellent walking properties. Outsole with BUGrip® technology, whose 17 dynamic carbide tip steel studs provide traction on both ice and wet asphalt. The perfect boot for recreational walks in the park or forest.



Boda M BUGrip® Black
H41015-9A

Boda W BUGrip® Black
H41016-9A



Boda M BUGrip® Hazel
H41015-9B

Boda W BUGrip® Hazel
H41016-9B



Upper:	Suede leather (LWG gold-rated)/ protective PU mudguard.
Insulation:	Vamp and toe 100g/ sqm Primaloft® Bio.
Lining:	Fleece. 100% recycled, bluesign® and solution dyed, GRS certified PET Polyester textile.
Insock:	BLOOM® foam EVA lined with Woolpower® recycled merino wool felt. Removable.
Midsole:	Lightweight EVA with 20% BLOOM® foam.
Outsole:	Rubber with BUGrip® carbide steel tip studs.
Size:	US 7–13 (40–47)/USL 5,5–USL 10,5 (36–42)
Last:	Wide comfort fit last with roomy toe box.

SUSTAINABLE HIGHLIGHTS:

- Insulation made of Primaloft® Bio, a recycled and biodegradable insulation material.
- The BUGdri® membrane is made of 50% GRS certified and recycled PET Polyester.
- The BUGrip® outsole contains 20% recycled rubber.
- Midsole EVA contains 20% BLOOM® foam, which is made from algae from overgrown lakes.



x kg



x%



x%



BODA MICHELIN

Winter walking and everyday active lifestyle.

Non-studded MICHELIN outsole / BUGdri® membrane /
Primaloft® Bio insulation / Great walking comfort.

Weatherproof walking boot, with warm insulation and Michelin winter compound outsole. The suede leather upper, the protective mudguard and a BUGdri® membrane keep slush out and the feet dry. A side zipper and the pull-on finger loops at back and front make Boda easy to put on. The Primaloft® Bio insulation and fleece lining keep the feet warm and together with the roomy last and toe box a healthy foot climate is created.

The midsole stability and roll have excellent walking properties. The non-studded Michelin Wic rubber keeps its excellent traction properties also in low temperatures and makes winter walks enjoyable.



Boda M Michelin Black
H41015-0A

Boda W Michelin Black
H41016-0A



Boda M Michelin Hazel
H41015-0B

Boda W Michelin Black
H41016-0B



Upper:	Suede leather (LWG gold-rated)/ protective PU mudguard.
Insulation:	Vamp and toe 100g/ sqm Primaloft® Bio.
Lining:	Fleece. 100% recycled, bluesign® and solution dyed, GRS certified PET Polyester textile.
Insock:	BLOOM® foam EVA lined with Woolpower® recycled merino wool felt. Removable.
Midsole:	Lightweight EVA with 20% BLOOM® foam.
Outsole:	Rubber with BUGrip® carbide steel tip studs.
Size:	US 7–13 (40–47)/USL 5,5–USL 10,5 (36–42)
Last:	Wide comfort fit last with roomy toe box.

SUSTAINABLE HIGHLIGHTS:

- Insulation made of Primaloft® Bio, a recycled and biodegradable insulation material.
- The BUGdri® membrane is made of 50% GRS certified and recycled PET Polyester.
- Midsole EVA contains 20% BLOOM® foam, which is made from algae from overgrown lakes.



x kg



x%



x%



IVALO4 BUGrip®

Winter walking.

BUGrip® outsole with 16 dynamic steel studs / Water repellent upper / Great walking comfort.

Ivalo BUGrip® is one of the all-time Icebug best-sellers. This version has seen some upgrades but is still as convenient and light as ever. The upper is quilted RipStop with good water resistance. The insulation layer is made of 100% recycled polyester. Ivalo is protected from snow and slush by the mudguard that wraps the whole lower footpart of the boot.

Weather resistant front zipper makes Ivalo easy to put on and off. ESS stabilizer and lots of forefoot rocker gives stable platform for fast and healthy feet. Wide ergonomic last. Outsole with dynamic carbide tip studs gives confidence on ice but walks completely civilized on pavement and other surfaces.



Ivalo4 M BUGrip® Black
F13102-9A

Ivalo3 W BUGrip® Black
F13103-9A



Ivalo4 W BUGrip® Mulberry
F13103-9B



Upper:	RipStop textile 100 % recycled Polyester, solution dyed and bluesign® certified with recycled PET quilt insulation.
Lining:	Fleece 100 % recycled Polyester, solution dyed and bluesign® certified.
Insulation:	100 % recycled Polyester.
Insock:	BioEco 70 % GRS certified recycled polyurethane, lined with 100 % recycled Polyester, solution dyed and bluesign® certified textile.
Midsole:	EVA with 20 % BLOOM® foam. ESS arch stabilizer.
Outsole:	20 % recycled Rubber with BUGrip® 16 carbide tip studs.
Size:	US 7–12, 13 / USL 5.5–10.5
Last:	Wide comfort fit walking last.

SUSTAINABLE HIGHLIGHTS:

- Upper RipStop textile and fleece lining textile are both bluesign® certified, solution dyed and made from 100 % recycled GRS certified PET Polyester.
- Midsole compound made from 20 % BLOOM® foam EVA.
- BLOOM® foam EVA insock lined with Woolpower recycled merino wool felt.
- Outsole with 20 % recycled rubber.
- Milspeed inner heel and toe reinforcements made of 60 % recycled plastic. 11–12 % is recycled nylon fishing nets.



BLOOM



13,7 kg



33 %



11 %



GROVE REWOOL W BUGrip®

Winter lifestyle with function and elegance.

Elegant winter boot / BUGrip® outsole with 14 dynamic steel studs / BUGdri® membrane.

This version of Grove has a BUGdri® membrane that keeps your feet dry during those longer days out. The upper is made of Nubuck leather and wool, a combination that both insulates and has water repellent properties. It has a BUGdri® membrane that keeps water out. A long medial zipper makes Grove easy to take on and off.

Soft bluesign® fleece lining and insock made from recycled wool and Bloom algae foam make the insulation capacity really good. The wide last create a super comfy feeling when walking. Carbide studded BUGrip® outsole gives confidence on ice and snow but walks completely civilized on pavement and other surfaces.



Grove ReWool W BUGrip® Black/Grey
G09006-9A



Grove ReWool W BUGrip® Coffee/Grey
G09006-9B



Upper:	DriTan™ oily Nubuck leather and wool.
Lining:	Bluesign®, solution dyed terry fleece.
Insock:	BLOOM® foam EVA lined with Woolpower recycled merino wool felt.
Membrane:	BUGdri® made from 50 % recycled GRS certified PET Polyester.
Midsole:	EVA with 20 % BLOOM® foam.
Outsole:	20% recycled rubber with BUGrip® 14 carbide tip studs.
Size:	USL 5,5–USL 10,5 (36–42)
Last:	Comfort fit last with roomy toebox.

SUSTAINABLE HIGHLIGHTS:

- DriTan™ oily Nubuck leather.
- Woolpower® recycled merino wool felt.
- 20 % recycled rubber outsole.
- BUGdri® made from 50 % recycled GRS certified PET Polyester.
- BLOOM® foam EVA insock lined with Woolpower recycled merino wool felt.
- BLOOM® foam EVA midsole.
- Bluesign® certified and solution dyed fleece lining in footpart.
- Milspeed inner heel and toe reinforcements made of 60 % recycled plastic. 11–12 % is recycled nylon fishing nets.



BLOOM

Woolpower
ÖSTERSUND



15,4 kg



23%



33%



GROVE REWOOL W MICHELIN

Everyday winter walking.

Elegant winter boot / Non-studded Michelin outsole / BUGdri® membrane.

This version of Grove has a BUGdri® membrane that keeps your feet dry during those longer days out. The upper is made of Nubuck leather and wool, a combination that both insulates and has water repellent properties. It has a BUGdri® membrane that keeps water out. A long medial zipper makes Grove easy to take on and off.

Soft bluesign® fleece lining and insock made from recycled wool and Bloom algae foam make the insulation capacity really good. The wide last create a super comfy feeling when walking. Rubber outsole with Michelin Winter Compound both provides winter traction and goes along well with sensitive floors in, for instance, restaurants and shops.



Grove ReWool W Michelin Black/Grey
G09006-0A



Grove ReWool W Michelin Coffee/Grey
G09006-0B



Upper:	DriTan™ oily Nubuck leather and wool.
Lining:	Bluesign®, solution dyed terry fleece.
Membrane:	BUGdri® made from 50 % recycled GRS certified PET Polyester.
Insock:	BLOOM® foam EVA lined with Woolpower recycled merino wool felt.
Midsole:	EVA with 20 % BLOOM® foam.
Outsole:	Rubber, Michelin Winter Compound.
Size:	USL 5,5–USL 10,5 (36–42)
Last:	Comfort fit last with roomy toebox.

SUSTAINABLE HIGHLIGHTS:

- DriTan™ oily Nubuck leather.
- Woolpower® recycled merino wool felt.
- BLOOM® foam EVA insock lined with Woolpower recycled merino wool felt.
- BLOOM® foam EVA midsole.
- BUGdri® made from 50 % recycled GRS certified PET Polyester.
- Bluesign® certified and solution dyed fleece lining in footpart.
- Milspeed inner heel and toe reinforcements made of 60 % recycled plastic. 11–12 % is recycled nylon fishing nets.



SOLES
BY
MICHELIN

BLOOM

Woolpower
OSTERSUND



14,7 kg



25%



40%



LARVIK HEMP BIOSOLE™

For the urban explorer.

Biosole™, with 62% natural rubber / Water repellent hemp and nubuck upper / Sustainable comfort.

This product has two main focuses: Reduce the use of plastics in performance footwear and provide a comfortable foot climate! The use of 100% Hemp and Wool padding in the collar and tongue creates great thermo regulating properties; cools the feet when it's warm and warms when it's cold. The Oily nubuck leather makes the boot water repellent where it needs it the most and the Hemp is treated with a PFC-free DWR.

The water repellency can also be increased by applying a natural beeswax. Larvik Hemp Biosole is a boot made for everyday activities and light hiking. It's stable and well cushioned to support the feet during longer day hikes and equipped with amazing grip outsole design and rubber compound. Larvik is the shoe for the sustainability aware outdoor enthusiast.



Larvik Hemp Biosole™ TrueBlack
H84003-0A



Larvik Hemp Biosole™ Coffee/Black
H84003-0B



Larvik Hemp Biosole™ PineGrey/Black
H84003-0C



Upper: DriTan™ oily nubuck leather and 100% Hemp.
Lining: PET Polyester. 100% recycled, bluesign®, solution dyed and GRS certified.
Insock: BLOOM® foam EVA, lined with bluesign®, solution dyed textile made from 100% recycled GRS certified PET Polyester textile.
Midsole: Lightweight EVA with 20% BLOOM® foam.
Outsole: Biosole™, with 62% natural rubber.
Size: US 4–12, 13 (36–47)
Last: Regular

SUSTAINABLE HIGHLIGHTS:

- Upper is made of DriTan™ oily nubuck leather that is gold rated by LWG.
- Parts of the upper are made of 100% hemp.
- Midsole EVA contains 20% BLOOM® foam, which is partly made from algae from overgrown lakes.
- Biosole™ outsole, with 62% natural rubber.



13 kg



22%



37%



DALA BIOSOLE™

Winter lifestyle with function and elegance.

Biosole™, with 62% natural rubber / Water resistant / Warm wool lining.

Dala Biosole™ is soft and very warm. The upper is water repellent suede and the lining is wool mix to keep feet dry and warm on the coldest winter days. The fluffy wool gives amazing insulation and coziness. The collar is made of smooth Yulex, a bio based material made from FSC certified natural rubber.

Dala is an easy to use slip-on boot, no zippers or laces to manoeuvre with cold fingers. The Biosole™ midsole extends upwards around the foot, creating both a splashguard against slush and snow but also a timeless look.



Dala Biosole™ Black
I01001-0A



Dala Biosole™ Espresso
I01001-0B



Dala Biosole™ Burgundy
I01001-0C



Upper: LWG Gold Rated suede leather, Yulex® plant base natural rubber.
Lining: Recycled wool.
Insock: BLOOM® foam EVA lined with felted recycled wool.
Midsole: EVA with 20% BLOOM® foam.
Outsole: Biosole™, with 62% natural rubber.
Size: US 4–12, 13.
Last: Comfort fit last.

SUSTAINABLE HIGHLIGHTS:

- Upper: LWG Gold Rated suede leather.
- Elastic upper: Yulex from 85% FSC certified natural rubber.
- Yulex lining: 89–100% recycled Polyester fabric.
- Midsole compound made from 20% BLOOM® foam EVA.
- Lining: 70% recycled Wool, 30% recycled Polyester.
- Heel/Toe counters: Milspeed, 11–12% recycled fishing nets, 45–48% recycled polyethylene.
- Insock made in BLOOM® foam EVA, lined with 100% recycled bluesign® certified and solution dyed Polyester mesh.
- Biosole™ outsole, with 62% natural rubber.



BLOOM



n/a yet



n/a yet



n/a yet



EIDE REWOOL BIOSOLE™

Soft wooly sneaker.

Biosole™, with 62% natural rubber / Wool with natural thermo-regulating qualities / Great walking comfort.

Eide has a mono-material upper made from felted wool. The design is clean and minimalist with a sneaker appeal. The felted wool is made from upcycling scrap from wool clothes and fabric production. The wool upper only has one layer of material, minimizing the use of glue and different materials.

Thanks to the excellent natural properties of wool Eide has natural anti-odour qualities as well as great thermo-regulating qualities – being cold when it is warm and warm when

it is cold. The soft and comfortable upper together with the cushioning s EVA midsole with BLOOM® foam makes this shoe super comfortable.

The perfect lifestyle shoe, combining comfort with a strong sustainability focus.



Eide ReWool Biosole™ Dark Grey
F88027-0A



Eide ReWool Biosole™ PineGreen
F88027-0D



Upper:	Recycled wool, minimum of 50 % wool content (mixed with synthetics).
Lining:	None
Insock:	BLOOM® foam EVA lined with Woolpower recycled merino wool felt.
Midsole:	BUGforce® EVA with 20 % BLOOM® foam.
Outsole:	Biosole™, with 62 % natural rubber.
Size:	US 4–12, 13 (36–47)
Last:	Wide

SUSTAINABLE HIGHLIGHTS:

- Upper is made of at least 50 % recycled wool.
- Midsole EVA contains 20 % BLOOM® foam, which is partly made from algae from overgrown lakes.
- The Biosole™ outsole contains 62 % natural rubber.
- The Milspeed inner heel and toe reinforcements are made of 60 % recycled plastic, out of which 11–12 % are recycled nylon fishing nets.



8 kg



27 %



37 %



ELI RB9X[®]

Walking and living.

RB9X[®] non-studded traction rubber / Airy and comfy upper / Easy pull on style.

Eli is perfect for walking and living, combining the airiness of a sports sandal with the casual sportiness of a great looking sneaker. Engineered mesh upper keeps the feet cool on summer days. Ergonomically shaped last, memory foam insock and midsole roll for superb foot health.

Well-cushioned BUGforce[®] midsole results in a soft impact and an appx 50% better energy return than a standard EVA foam midsole. Elastic cord instead of regular lacing provides an easy on and off feature. RB9X[®] outsole provides traction on Sunday strolls and downtown walks.



Eli RB9X® Black
F88025-0A



Eli RB9X® SteelBlue
F88025-0B



Eli RB9X® Turquoise
F88025-0D



Eli RB9X® Olive
F88025-0E



Eli RB9X® PearlWhite
F88025-0G



Eli RB9X® Mustard
F88025-0J



Upper: Knitted engineered mesh of 100 % recycled and solution dyed PET Polyester yarn.

Lining: Bluesign® 100 % recycled and solution dyed PET Polyester textile.

Insock: Ortholite Hybrid lined with bluesign® 100 % recycled and solution dyed PET Polyester.

Midsole: BUGforce® EVA with 20 % BLOOM® foam.

Outsole: RB9X® non-studded traction rubber.

Size: US 4–12, 13, 14, 15 (36–49)

Last: Wide

SUSTAINABLE HIGHLIGHTS:

- Upper from 100% recycled GRS certified and solution dyed Polyester.
- The Milspeed inner heel and toe reinforcements are made of 60% recycled plastic, out of which 11–12% are recycled nylon fishing nets.
- Midsole EVA contains 20% BLOOM® foam, which is partly made from algae from overgrown lakes.
- The RB9X® outsole contains 31 % natural rubber and 15 % recycled rubber.



8 kg



34%



13%



AURA REWOOL RB9X®

The perfect walking shoe,
with a light airy upper and top notch comfort.

RB9X® non-studded traction rubber / Light and airy upper / Full cushion and high comfort.

Wearing Aura ReWool is like walking on clouds, with its full cushion and low weight. The aim when designing the shoe has been to maximize the usage of natural materials. Wool is great when it comes to create a good foot climate and especially when the entire upper is designed as a one layer engineered knit to keep it as airy and thin as possible.

The upper material consists of 50% ReWool in the upper, as recycled wool has a far lower impact on the environment than what virgin wool has, but in order to give the

shoe an abrasion resistance it is mixed with 50% recycled polyester. The midsole is soft and has energy returning BUGforce® mixed with BLOOM® algae EVA. The removable insock is lined with recycled felted wool from Woolpowers production. The RB9X® provides benchmark traction at both dry and wet surfaces. Aura ReWool is the perfect summer lifestyles and walking shoe.



Aura ReWool RB9X® WhiteSand
I23003-0B



Upper:	50% of recycled wool and 50% bluesign®, GRS certified and solution dyed recycled Polyester.
Lining:	None
Insock:	BLOOM® foam EVA lined with Woolpower recycled merino wool felt.
Midsole:	BUGforce® EVA with 20% BLOOM® foam.
Outsole:	RB9X® non-studded traction rubber.
Size:	US 4–12, 13 (36–47)
Drop:	6 mm
Last:	Regular with roomy toebox.

SUSTAINABLE HIGHLIGHTS:

- Upper is made of 50% recycled wool and 50% recycled Polyester.
- Midsole EVA contains 20% BLOOM® foam, which is partly made from algae from overgrown lakes.
- The RB9X® outsole contains 15% recycled rubber.



8 kg



21%



31%

PROFESSIONAL

When the work need to be done!

Icebug heavy duty safety shoes provide the best possible traction.

They are both warm, stable, durable and comfortable for long hours work.





OVERVIEW PROFESSIONAL



VIDAR PRO 2 HIGH BUGRIP®

Black
F13068-9A



VIDAR PRO 2 BUGRIP®

Black
F13071-9A



VIDAR PRO 2 MICHELIN

Black
F13071-0A





Vidar Pro 2 High BUGrip® Black
F13068-9A

VIDAR PRO 2 HIGH BUGrip®

BUGrip® outsole with 16 steel studs / Protection: EN ISO 20345, S3 /
BUGdri® membrane.

Heavy duty safety shoe equipped with the BOA® Fit System for long days of work with a precise fit without compromising on comfort. Sporty safety boot with the best possible allround traction. Stable upper in durable and water resistant leather/textile with rubber reinforcements. Waterproof BUGdri® membrane and insulating 200 gram Thinsulate lining. Penetration resistant midsole uses. The wide and anatomic last has a very high level of

comfort. The fit is excellent thanks to the micro adjustment of the BOA® Fit System and offer an even pressure around the foot. Toe cap in composite to keep warm feet. The shock absorption characteristics of the compression molded EVA midsole adds further comfort and decreases the skeletal stress. Oil resistant outsole with 16 dynamic carbide tip steel studs.

Upper:	Leather / rubber / Polyester textile / BUGdri®
Lining:	Fleece with 200 gr Thinsulate™.
Lacing:	The BOA® Fit System.
Insock:	PU removable, antistatic.
Midsole:	EVA with ESS stabilizer.
Outsole:	Oil resistant rubber with BUGrip® 16 carbide tip studs.
Toe cap:	S3 standard in composite.
Size:	US 4–13

PROTECTION: EN ISO 20345, S3

- Toecap in composite
- Anti-static properties
- Shock absorbing midsole
- Water resistant leather
- Oil resistant outsole
- Closed heel part
- Penetration resistance.



16,0 kg



0%



6%



Vidar Pro 2 BUGrip® Black
F13071-9A

VIDAR PRO 2 BUGrip®

BUGrip® outsole with 16 steel studs / BUGdri® membrane
Protection: EN ISO 20345, S3.

Mid-cut safety boot for long days of work in winter conditions. Equipped with the BOA® Fit System with the fit is precise without compromising on comfort. Stable upper in durable and water resistant leather/textile with rubber reinforcements. Waterproof BUGdri® membrane and insulating 200 gram Thinsulate lining. Penetration resistant midsole uses. The wide and anatomic last has a very high level of comfort.

The fit is excellent thanks to the micro adjustment of the BOA® Fit System and offer an even pressure around the foot. Toe cap in composite to keep warm feet. The shock absorption characteristics of the compression molded EVA midsole adds further comfort and decreases the skeletal stress. Oil resistant outsole with 16 dynamic carbide tip steel studs that provide reliable traction even on pure ice.

Upper:	Leather / Rubber / Polyester textile / BUGdri®
Lining:	Fleece with 200 gr Thinsulate™
Lacing:	The BOA® Fit System.
Insock:	PU removable, antistatic.
Midsole:	EVA with ESS stabilizer.
Outsole:	Oil resistant rubber with BUGrip® 16 carbide tip studs.
Toe cap:	S3 standard in composite.
Sizes:	US 4 –13

PROTECTION: EN ISO 20345, S3

- Toecap in composite
- Anti-static properties
- Shock absorbing midsole
- Water resistant leather
- Oil resistant outsole
- Closed heel part
- Penetration resistance.



16,1 kg



0%



6%



Vidar Pro 2 Michelin Black
F13071-0A

VIDAR PRO 2 MICHELIN

BUGrip® outsole with 16 steel studs / Protection: EN ISO 20345, S3.

Solid mid-cut safety boot with the best possible non-studded winter traction. Stable upper in durable and water resistant leather with rubber reinforcements. BUGdri® membrane keeps the feet dry and insulating 200 gram Thinsulate lining keeps them warm. Penetration resistant midsole uses composite material to block the cold from the ground and an insock with a laminated Alu-sheet reflects and keeps the heat generated

by the foot. The wide and anatomic last has a very high level of comfort. The fit is excellent thanks to the shape of the heel cup and the adjustable the BOA® Fit System. Toe cap in composite. The shock absorption characteristics of the compression molded EVA midsole adds further comfort and decreases the skeletal stress. Oil resistant outsole with 16 dynamic carbide tip steel studs.

Upper:	Leather / Rubber / BUGdri®
Lining:	Fleece with 200 gr Thinsulate®
Lacing:	The BOA® Fit System.
Insock:	PU memory foam, removable.
Midsole:	EVA with ESS-stabilizer.
Outsole:	Rubber, Michelin Winter Compound.
Size:	US 4–13

PROTECTION: EN ISO 20345, S3

- Toe cap in composite
- Anti-static properties
- Shock absorbing midsole
- Water resistant leather
- Oil resistant outsole
- Closed heel part
- Penetration resistance.



16,1 kg



0%



0%

ICEBUG INSOLES



Comfort Low Blue
518206A

Comfort Medium Blue
518207A

Comfort High Blue
518208A



Comfort Medium Charcoal
518207B

Comfort High Charcoal
518208B

COMFORT

The footbeds in the COMFORT range is for those seeking maximum cushioning in combination with the unique dynamic support Icebug Insoles provides. Icebug Insoles COMFORT fits most shoes with removable insole. Icebug Insoles COMFORT is 5 mm high. The footbed is available in three different variants, Low, Medium and High, to fit various arch heights.



Slim Low Yellow
518306A

Slim Medium Yellow
518307A

Slim High Yellow
518308A



Slim Medium Black
518307B

Slim High Black
518308B

SLIM

Icebug Insoles SLIM is an extra thin version of our footbed. It fits in shoes suited for running and soccer as well as your casual sneakers. The footbed provides the same support as Icebug Insoles FAT but with somewhat less cushioning. Icebug Insoles SLIM is 2 mm high. The footbed is available in three different variants, Low, Medium and High, to fit various arch heights.

H2O PROPERTIES

GORE-TEX®

Products with this symbol are 100% waterproof and are engineered with GORE-TEX® Extended Comfort Footwear technology that carries the GUARANTEED TO KEEP YOU DRY™ promise. They combine durable waterproofness and optimized breathability, offering enduring waterproof protection and optimized climate comfort. Water stays on the outside while perspiration can easily escape from the inside.



BUGdri®

The BUGdri® marked products have a tape sealed boot construction, where the membrane surrounds the foot like a sock between the lining and upper material to keep water out and provide a good micro climate inside.



WATER RESISTANT

Water resistant footwear use materials that are treated or dense enough to repel water. Water resistant products give you protection from foul weather, splashing and slush. The gain is a high level of breathability and the ability to shape better with the foot. To maintain the water resistance of a treatment a material needs to be taken care of properly.



NON ABSORBING

Non absorbing materials gain very little weight when they get wet. Important for footwear used in wet condition activities where weight is a critical factor. Note that being non-absorbing does not mean that they keep the inside of the shoe dry.



THE BOA® FIT SYSTEM

Delivering fit solutions purpose-built for performance, the BOA® Fit System consists of three integral parts: a micro-adjustable dial, a super-strong light-weight lace and low friction lace guides. Each unique configuration is engineered for fast, effortless, precision fit and is backed by the BOA® Guarantee.



THE BENEFITS OF THE BOA® FIT SYSTEM

AGILITY AND SPEED

The BOA® Fit System enables faster, more powerful directional changes through a seamless connection between equipment and body.

POWER AND PRECISION

Power without compromising precision, the BOA® Fit System delivers more explosive action and unparalleled accuracy.

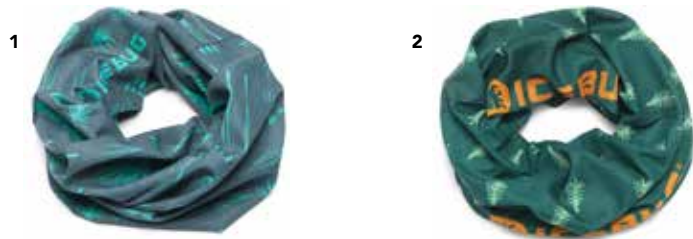
ENDURANCE AND HEALTH

Go further, faster, and stronger. The BOA® Fit System saves energy by improving circulation and efficiency.

DURABILITY AND QUALITY

Engineered with high quality, durable materials, and rigorously field tested, the BOA® Fit System is guaranteed to perform in any environment.

ACCESSORIES



1–2. ICETUBE

A stretchy tube with a range of applications. Use as a neck warmer, hat, bandana or something else. Very nice for when the temperature starts dropping!

1. 99251H Icetube Barr. 2. 99251J Icetube Woods.



3–5. ICETUBE

3. 99251K Icetube NorthernLight.

4. 99251L Icetube Dusk.

5. 99251M Icetube AutumnBirch.



6. WARM WOOL SOCK

99550A Black/Grey. Material: 68% Wool, 29% PA, 3% Lycra. Made in Sweden.

Sizes: EUR 34–36, 37–39, 40–42, 43–45, 46–48.

7. ACTIVE MERINO SOCK

99549A Spots Black/Grey. Material: 60% Merino wool, 34% PA, 6% Lycra. Made in Sweden.

Sizes: EUR 34–36, 37–39, 40–42, 43–45, 46–48.

8. ACTIVE MERINO SOCK

99549B Spots Black/Hibiscus. Material: 60% Merino wool, 34% PA, 6% Lycra. Made in Sweden.

Sizes: EUR 34–36, 37–39, 40–42, 43–45, 46–48.



9. TRAIL MERINO SOCK

Black 99551A.

Material: 56% Merino wool, 26% PA, 18% Lycra. Made in Sweden.

Sizes: EUR 34–36, 37–39, 40–42, 43–45, 46–48.

10. TRAIL MERINO SOCK

Storm Blue 99551B.

Material: 56% Merino wool, 26% PA, 18% Lycra. Made in Sweden.

Sizes: EUR 34–36, 37–39, 40–42, 43–45, 46–48.

ACCESSORIES

The FloorSaver use our most natural Biosole™ compound, with 62% natural rubber which is FSC certified.

11. FLOORSAVER

Black I38001

The FloorSaver is a complete redesign of the previous "overshoe". This is a very smart accessory that protects indoor floors from your metal studs, which comes in handy if some shops have a "no-studs" rule.

This new design is much easier to put on and off than the previous version and can easily be rolled together for storage. The FloorSaver can be used for all of our studded shoes.

There are three sizes:

Small (for sizes 36–39)

Medium (for sizes 40–43)

Large (for sizes 44–47).



12



12. POCKET GAITER

Black B1599C.

Light weight, elastic gaiter that keeps mud and debris out of the shoes. The gaiter is water repellent, still with a very high level of breathability. A major injury risk during winter is that the Achilles tendon gets wet, cold and stiff. Sealing the edge of the shoe, and adding warmth to this area, helps preventing this problem.

There are three sizes:

Small (for sizes 36–39)

Medium (for sizes 40–43)

Large (for sizes 44–47).



Icebug is a Swedish footwear brand, started by mother and son in 2001, to save the World from slipping. We're experts on traction technologies, empowering people to get outdoors and enjoy being active all year round. Still being independent means that we are free to take decision based on what we think is right long term. Like changing the way the footwear industry – and indeed business in general – works. Join us in the quest for a sustainable future!



Icebug is the first outdoor or performance footwear brand to join One Percent for the Planet. This means that we're joining a global community for change that commits to use at least one percent of the annual sale to support environmental non-profits in their work.



Icebug has offset all historical carbon emissions and since 2019 we're offsetting 200% of emissions caused, getting recognized by the UN as the World's first climate positive outdoor footwear brand. We've already made substantial reductions and have committed to cut emissions by 50% to 2030 and be net-zero by 2050 – following the roadmap to keep global warming below 1,5 degrees. Icebug and all our products have also been third party certified as Climate Neutral by climateneutral.org.

ICEBUG AB Headquarter
Fabriksstråket 35,
433 76 Jonsered, SWEDEN

Office Phone +46 (0) 31 817 090
info@icebug.se

www.icebug.com

